

CANOPY INSTALLATION



CraftBilt
Manufacturing Co.

53 Souderton-Hatfield Pike • Souderton, PA 18964
215-721-7700 • fax 215-721-9338
www.craftbilt.com

TABLE OF CONTENTS

Canopy Installation

A. Tool List.....	Page 3
B. Introduction.....	Page 4
C. Unpacking.....	Page 4
D. Preparing to Install.....	Page 4
E. Site Planning and Key Points.....	Page 5
F. Free Standing Canopy Installation.....	Page 6
G. Fabric Assembly and Installation.....	Page 9
H. Rope Installation.....	Page 11
I. Wall Mount Canopy.....	Page 14
J. Under mount Continuous Fabric/Joined Canopy.....	Page 18
K. Multiple Joined Canopy.....	Page 20
L. Canopy Post and Gusset Assembly.....	Page 22
M. Canopy Parts List.....	Page 23
N. Optional Side Curtain Installation.....	Page 24

TOOL LIST

Tools listed below are required to install and service all models of Craft-Bilt Manufacturing Canopies. Not every tool is required for every installation.

- 3/8" reversible drill
- Hammer drill for concrete installations
- 3/8" masonry drill bit
- 1/4" & 3/8" high speed drill bits
- 1/4" hex driver, Square drive bit for side curtains
- 1/2" impact wrench
- 1/2" drive sockets 7/16", 9/16" and 3/4"
- 1/2" drive ratchet
- 13 and 17mm mm combination wrench
- 3/8 drive ratchet with 13mm and 17mm Sockets and 4" extension.
- Philips head screw driver
- Allen wrenches, metric: 3mm, 6mm
- Utility knife
- Tape measure
- 4' Level
- Chalk line
- Soapstick or piece of chalk
- Touch up paint
- Eye protection
- Proper ladders
- Flat pry bar
- 10-12" chop saw (only required if trimming extrusions)

Additional Hardware and Materials

The following hardware or materials may be required, depending on your installation:

- 2" x 8" kiln dried lumber for mounting board on house wall applications
- 5/16" x 4" galvanized lag screws, for installing mounting board to studs in house wall (available from Craft-Bilt in bags containing 25 lags and 25 washers - # 73COFS08XXXX)
- 1/4" galvanized washers
- 1/2" galvanized washers (for shimming)
- Trim nails
- Vinyl capping or aluminum coil to cover mounting board (Vinyl capping is available from Craft-Bilt)

INTRODUCTION

Thank you for choosing a Craft-Bilt Manufacturing retractable canopy.

For this canopy to operate as designed, it must be properly installed. Please follow these instructions exactly and use all the components and fasteners, as described.

Retractable canopies are intended as protection against sun only. Do not use in strong wind, rain, hail or snow.

Every home improvement project should begin with safety precautions. Always wear eye protection and follow the safety instructions that came with your tools. A typical installation requires at least two or three people, depending upon the weight of the awning and accessibility at the site.

Be careful of staples when opening the shipping carton.

UNPACKING

The canopy extrusions are wrapped with bubble wrap. Carefully lift out the extrusions, and remove from the box and lay on a flat, level surface.

Be careful not to cut the awning fabric when removing wrapping. Clean hands of grease/dirt before handling the fabric.

Check the canopy against the packing list. Notify the Craft-Bilt Customer Satisfaction Department at (215) 721-7700 if you feel there are any discrepancies.

The canopy is shipped partially assembled. Please follow installation instructions for your canopy type and mounting situation.

All the canopies must be securely fastened to a wooden deck or concrete pad. There are two canopy types, one is designed to be wall mounted, the other is free standing.

PREPARING TO INSTALL

Relocate hanging objects from inside wall during installation.

Wall installations use two or more mounting brackets supplied with the canopy. **It is critical that all brackets are mounted level, plumb and on the same surface plane. Misaligned brackets will affect the appearance and functioning of the canopy.**

Refer to the appropriate section for your installation.

NOTE: There is no approved method for mounting the canopy to a fascia. Only professional installers should attempt to install awnings on structures with stone, cedar shake, or EIFS (exterior insulated finish system) exteriors.

Pressure treated lumber CANNOT be used. All pressure treated lumber is corrosive to fasteners, aluminum and anchors which would cause serious harm if failure occurs.

Site Planning and Highlights to a Trouble Free Installation.

1. Double check measurements of pad/deck with the measurements of the canopy.
2. Check for slope in pad/deck.
3. Depending on the amount of measured slope canopy posts may be cut down. If the slope exceeds more than 2" custom posts are available.
4. All canopies must be installed plumb and level (The slope is built into the fabric trolleys.)
5. For side curtains to operate properly posts must be plumb $\pm 1/8$ " from top to bottom.
6. If installing a side curtain, it is highly recommend not to have the crank operator and rope pull in the same corner.
7. Make sure to install the longer trolleys in the direction you want the water to run.
8. Do not fasten feet to pad/deck until the canopy frame work is completely assembled.
9. The rope cleat can be located in any of the 4 corners. However it's recommended location is on one of the posts below where the fabric gathers.
10. It is recommended that you layout all the posts and beams on the ground first. (Much of the canopy is factory assembled and therefore you have lefts/rights etc.)
11. It is recommended to assemble one side at a time by laying the parts on the ground (must be flat.) Then stand each side up and connect them with the beams.
12. Build the entire frame work (including the gussets) before installing the fabric.
13. A parts list with part numbers is included with these instructions for reference and for replacement parts.

Basic Free Standing Installation

These instructions cover the generic aspects of a canopy installation. After thoroughly reviewing all installation materials please contact Craft-Bilt Manufacturing Co. customer satisfaction department with any remaining questions. If you are installing a wall mount version please see instructions on page 14.

1. Layout all posts, beams, and trolley channels on the ground.
2. There are lefts and rights for the pre-assembled posts so make sure they are laid out correctly. (T-slots must face to the inside and the connecting plates run parallel with the beams that overhang. (See figure A below)
3. Determine the slope or pitch of the pad. Trim the posts to match the slope. Slope greater than 2" requires a special order post size.
4. Layout the first 2 posts, gussets and beam on the ground. Using the trolley channel to set the spacing is also recommended. (See fig. A below)
5. Slide (2) 20mm x 20mm threaded nuts into each end of the beam.
6. Locate the outer edge of each post 6.5" from the end of the beam.
7. Use (2)M8 x 18mm hex bolts along with (2) 8mm flat washers to fasten connecting plate to beam.
8. Check that the posts are plumb with the beam.
9. Using a 6mm hex (Allen) wrench insert rhombus nuts from gussets into T-slots on beam and post, make sure that rhombus nut is seated properly, then tighten up bolts. If any part of the rhombus nut can be seen after installation, it is not properly seated.

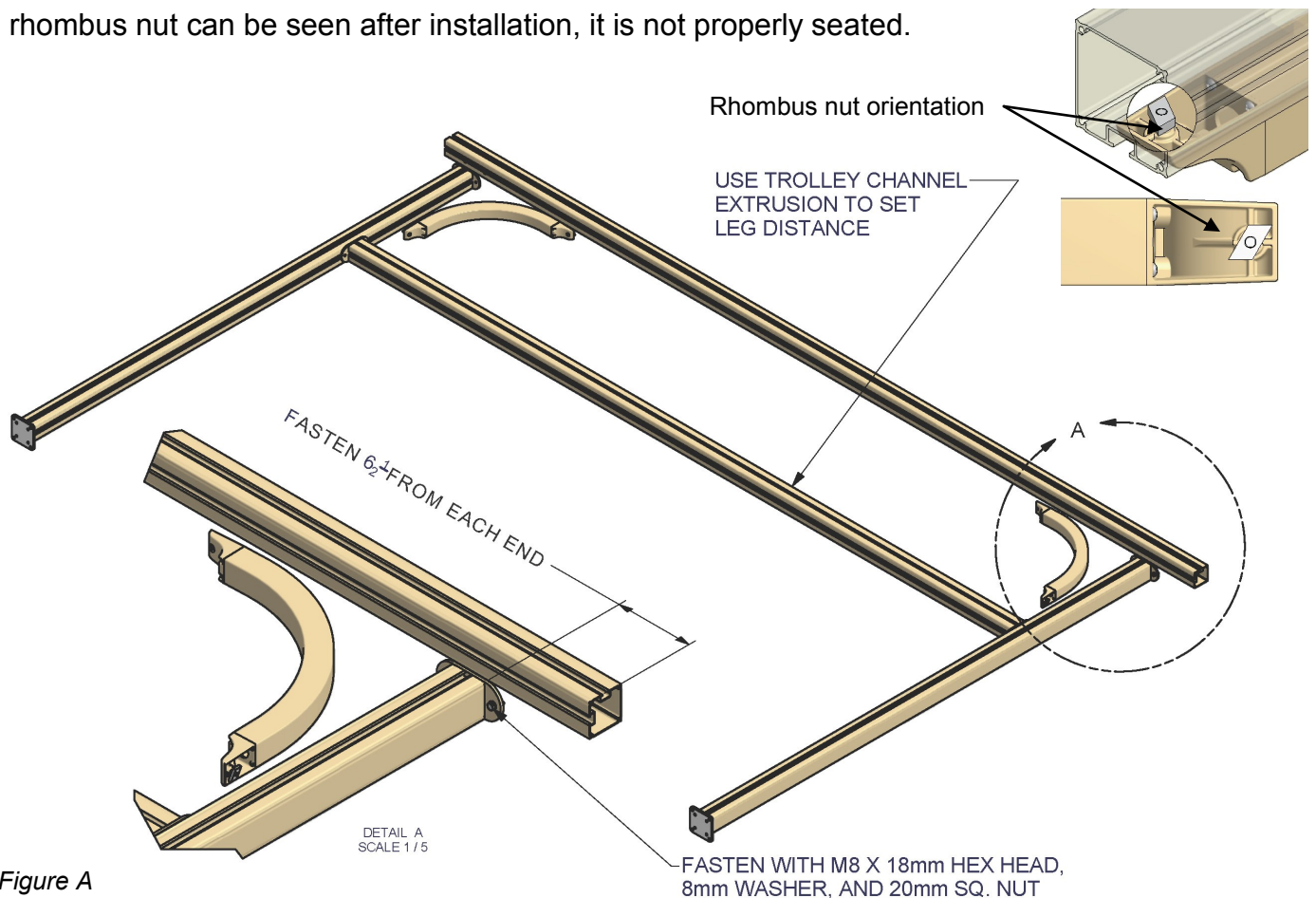


Figure A

Basic Installation Continued

10. Stand up both assemblies and temporarily brace as necessary.

11. Install M8 X 18mm hex head bolts and 8mm washers into the connecting plate holes. Hold bolts in place with 20mm square threaded nut. Repeat for other crossbeam.

12. With both assemblies standing lift up crossbeams and insert the 20mm square threaded nuts into the T-slots on the upper beams. Align with posts. (See detail A) Hand tighten bolts just enough to hold crossbeams in place. (See figure B)

13. Repeat for other side.

14. The finished frame should look like *Figure E* on page 8. Adjust beam locations to match posts if necessary.

14. Layout the Trolley Channel extrusions. Look for the end that contains the notch out and 4 holes (See *figure C*). This is the fixed side for the fabric, it is the side that the fabric gathers to.

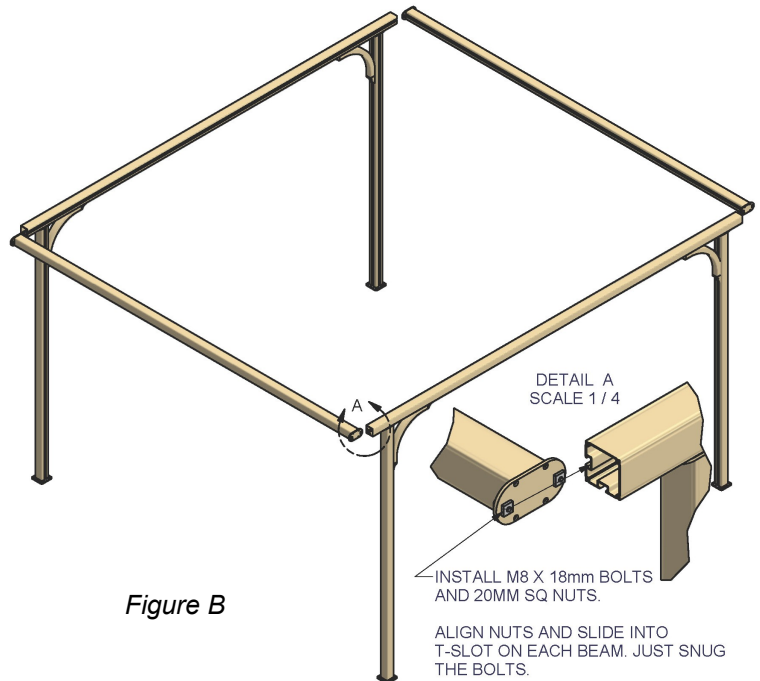


Figure B

15. The Trolley Channel measurement from the end of the beams must be determined. The factory has set this dimension based on the length of the Fabric Crossbars.

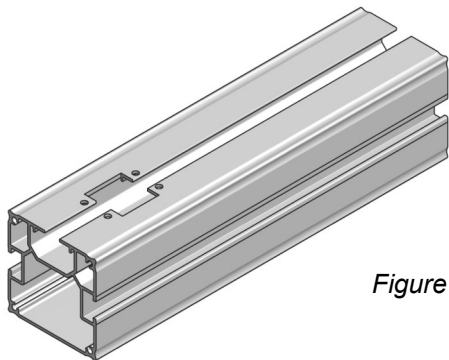


Figure C

See figure D on how to measure and place a mark on the crossbeam.

Note: If your canopy is motorized, please refer to the motorized supplement instructions. The exact Trolley Channel distance will be dictated by the length of the drive tube.

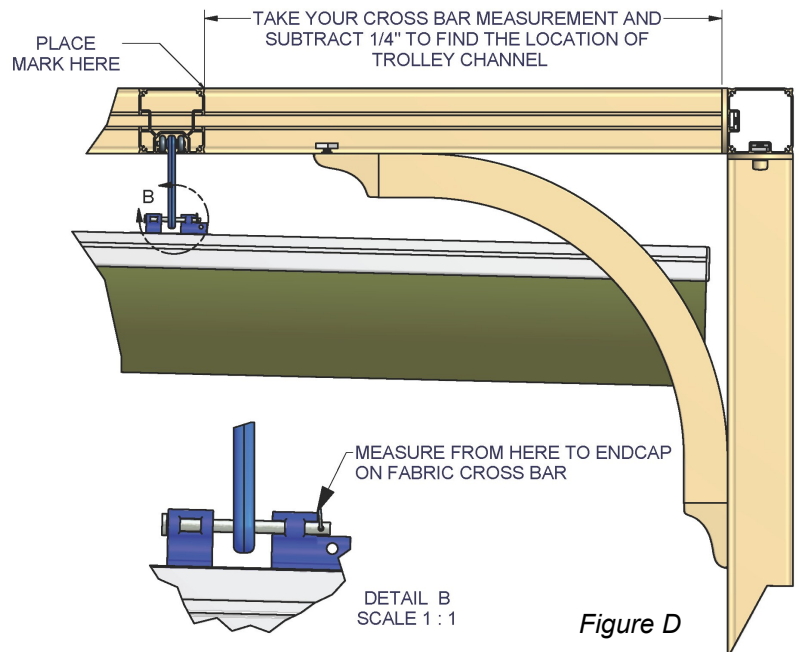


Figure D

Basic Installation Continued

16. Locate the factory installed M8 threaded nuts in the Crossbeam and slide them approximately 4" from both sides of your marks in step 15.
17. Align each end of the Trolley Channel with your mark (step 15) and secure with (2) M8 x 18mm bolts and (2) M8 flat washers.
18. Inspect the alignment of both Crossbeams to the posts. Make sure the t-slots are aligned.
18. Tighten all M8 bolts.

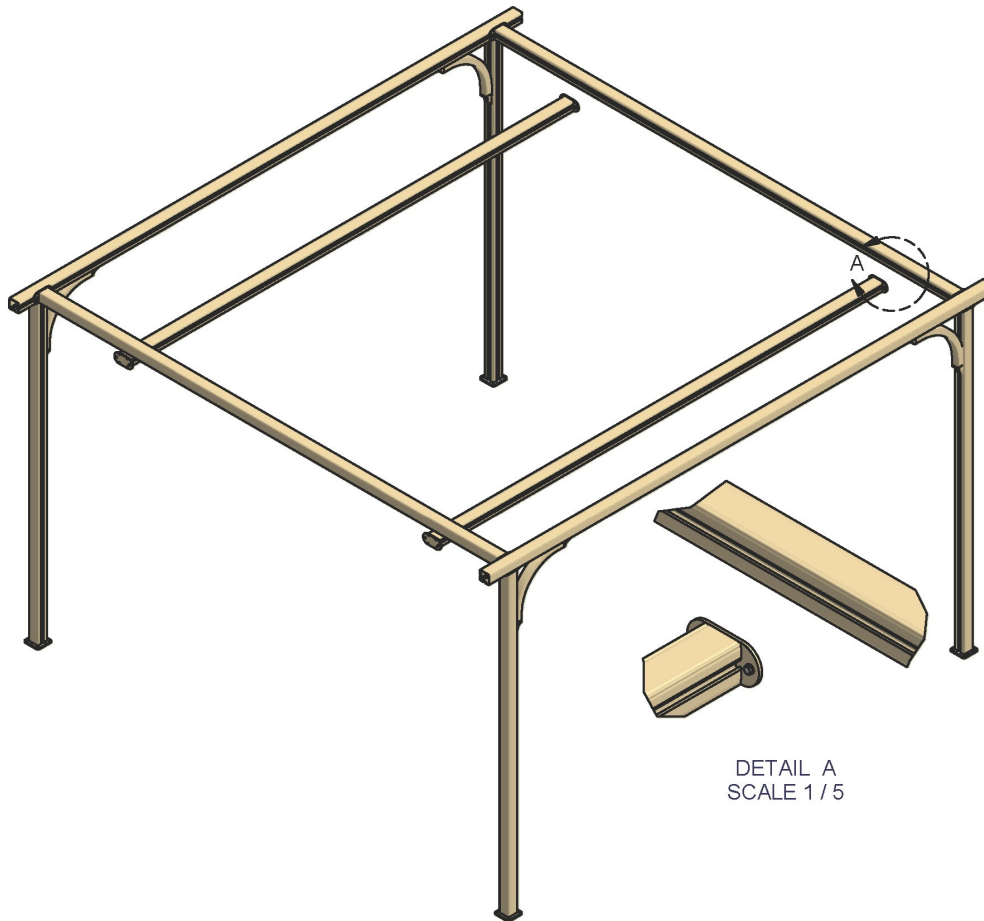


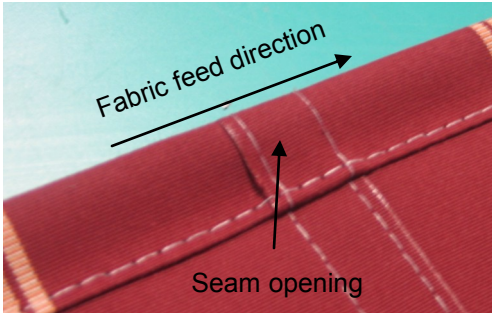
Figure E

19. Install the remaining 4 Gussets on each of the 4 corners.
20. Once the frame is completed and all the fasteners are tightened, you may move the canopy into its final position. Before fastening, adjust each post for plumb. Then fasten the feet down with the appropriate anchor and quantity (3/8 x 3" lags for wood, 3/8 x 3" anchors for masonry).

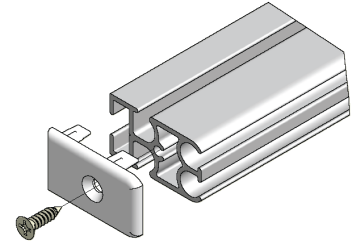
Basic Installation Continued—Fabric Assembly and Installation

Depending on the canopy width and projection the fabric may not be shipped completely assembled. You will have either single fabric or double fabric. Single fabric utilizes a rope. Here we will explain how to assemble the fabric. Please take your time to avoid tearing the fabric.

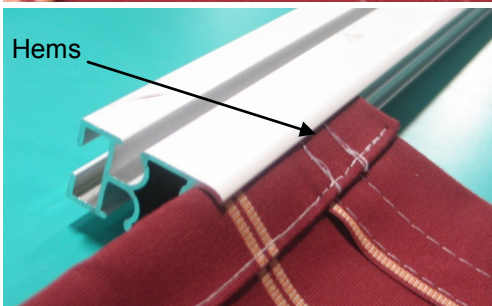
1. Place the canopy crossbars and their associated fabric on a clean flat working surface.



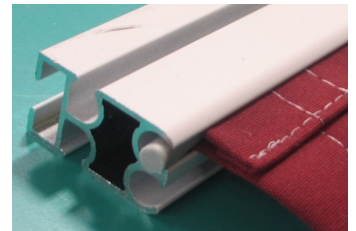
2. Depending on the size of the canopy the Fabric Crossbar End Caps be pre-installed. Remove by unscrewing the #8 SS sheet metal screw from the end. Make sure to save it so it can be re-installed later.



3. The chance of tearing the fabric is reduced if you slide the fabric in the direction with the seams.



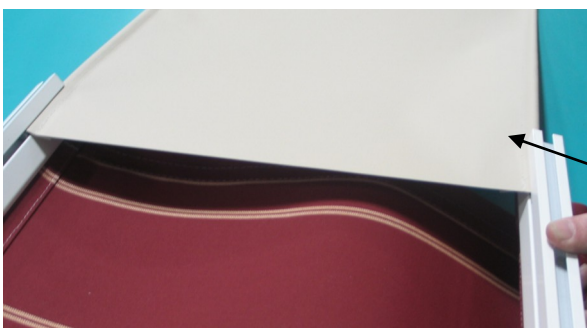
4. Make sure the fabric hems are on the top.



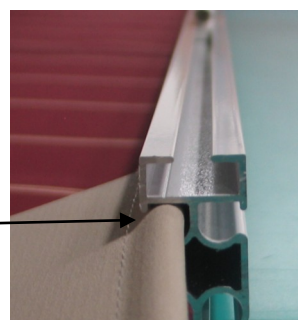
5. The fabric should be 1/4-1/2" from the end of the bars. Trim spline if necessary.

6. To maintain the fabric flutes either a 1/8" rope is used through the Fabric Crossbar Trolley Mounts or a secondary piece of material is used.

7. Depending on the size of the canopy, the secondary fabric may be either inserted on the ground,



or for larger units often after the fabric is installed on the Canopy. Be sure to place the fabric hems down. Install the Fabric Crossbar end caps.



UPPER FABRIC

8. If using the rope, install the fabric on the canopy. Then install the rope by threading it through the Trolley Mounts. Look for the black marks on the rope placed by the factory. They are the locations that you tighten the M4 screw against. Do not over tighten or you will strip the threads.

Rope



Basic Installation Continued—Fabric Installation & Final Assembly

21. Determine which direction you want the fabric to slope/pitch. There are up to 3 lengths of Trolley Assemblies. Install the longest of the trolley assemblies in the direction of the slope/pitch
22. Complete the Trolley Assemblies by removing the Hair Cotter Pin and Clevis Pin from the Trolley Mount and install the lower portion of the rod, then re-install the pins. Do this for all the Trolley Assemblies. The last trolley is the fixed one
23. With the end opposite of the fixed trolley, (see figure F for fixed trolley) work in unison, and begin feeding the trolley assemblies into the notch in the Trolley Channel, pushing them down the channel as you go along.
24. After the last wheeled trolley is inserted, the last one is the fixed one.
25. Remove the fixed rod by removing the hair cotter pin and clevis pin. (Figure F)
26. Carefully let the fabric and rails hang down.
27. Insert the fixed end into the notch by sliding it forward then back over the mounting holes. Make sure the orientation is correct. (Figure G)
28. Fasten each fixed trolley with (4) #8 x 3/4 hex head tek screws.
29. Attach Fabric Crossbar to fixed trolleys with the clevis and hair cotter pin.
29. Install the foot covers over each post. They are two pieces, twist them apart, then slide them down the post and twist them back together.
30. Install the Post and Beam End Caps. Use (2) #10 x 1" pan head screws on the bottom of each one.
31. Install the plastic M8 Bolt Covers over all the M8 hex head bolts.

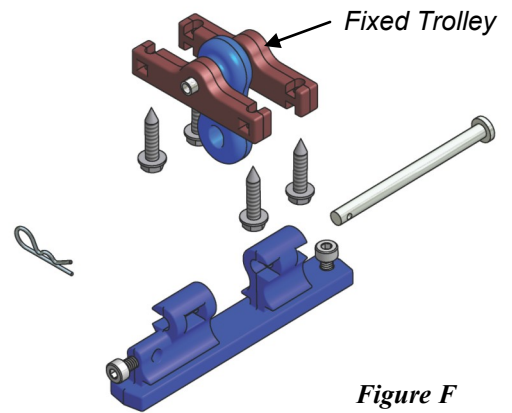


Figure F

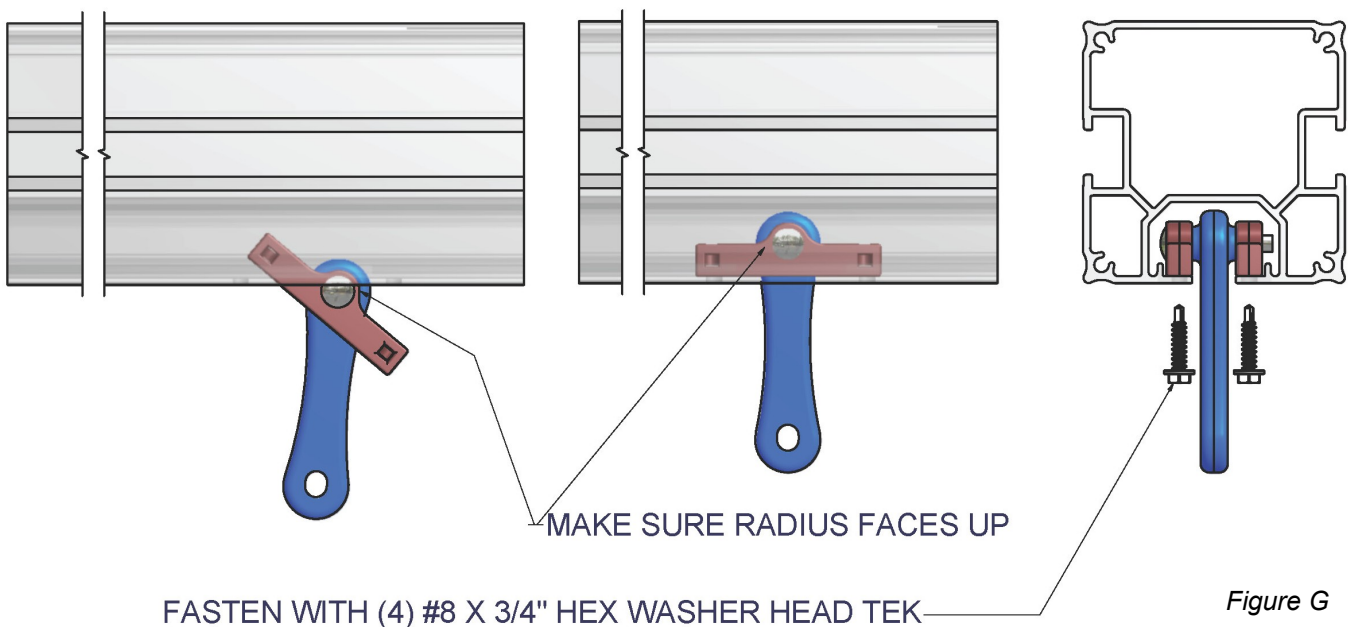
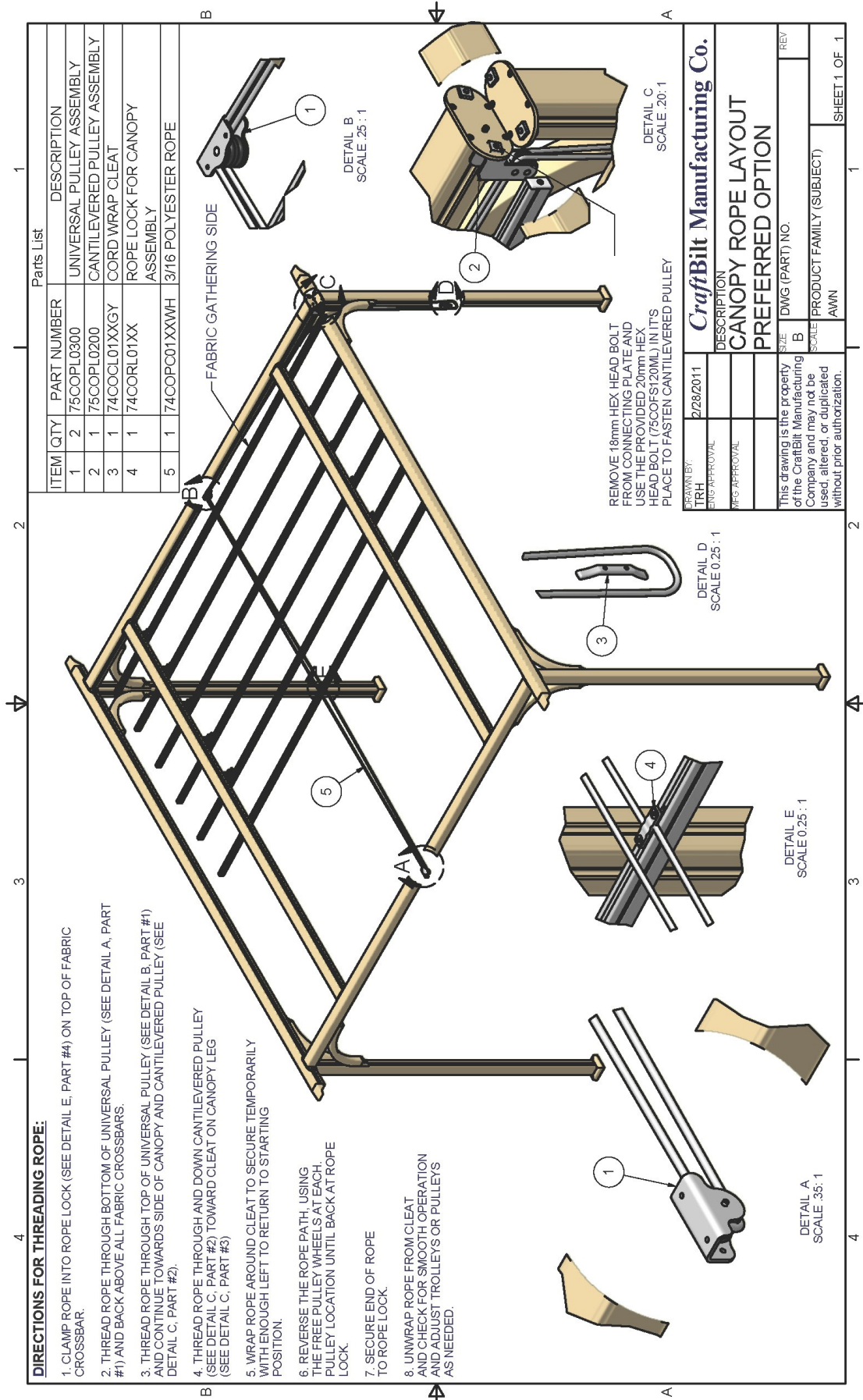


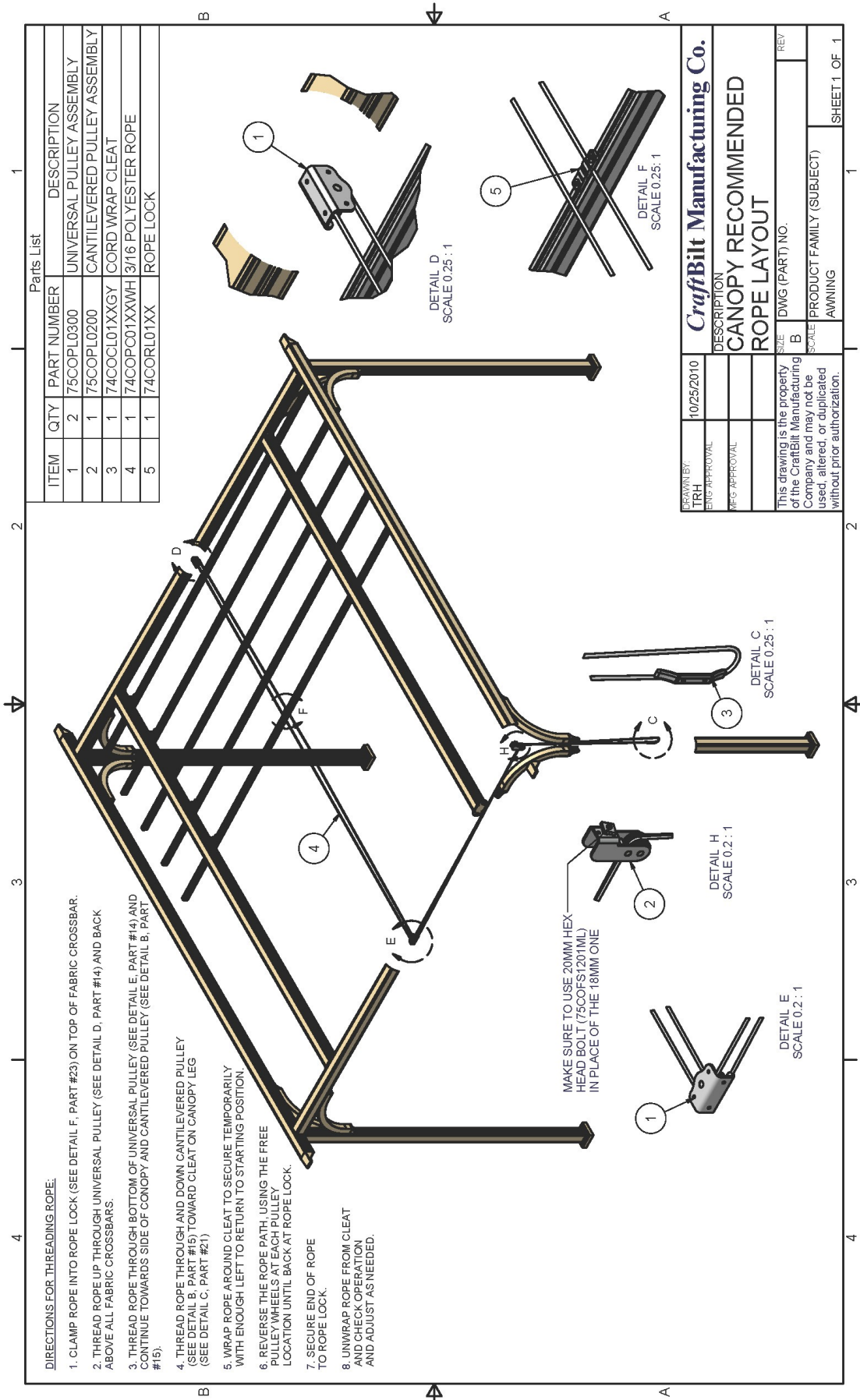
Figure G

Basic Installation Continued—Preferred Rope Installation

- Correct installation of the pull rope is critical to smooth operation.
- If you are mounting a gear operated side curtain DO NOT attach the rope cleat to the same corner as the gear. (The rope will become tangled by the crank handle hook.)



Basic Installation Continued—Alternate Rope Installation



Parts List

ITEM	QTY	PART NUMBER	DESCRIPTION
1	2	75COPLO300	UNIVERSAL PULLEY ASSEMBLY
2	1	75COPLO200	CANTILEVERED PULLEY ASSEMBLY
3	1	74COCL01XXGY	CORD WRAP CLEAT
4	1	74COP001XXWH	3/16 POLYESTER ROPE
5	1	74CORL01XX	ROPE LOCK

DIRECTIONS FOR THREADING ROPE:

1. CLAMP ROPE INTO ROPE LOCK (SEE DETAIL F, PART #23) ON TOP OF FABRIC CROSSBAR.
2. THREAD ROPE UP THROUGH UNIVERSAL PULLEY (SEE DETAIL D, PART #14) AND BACK ABOVE ALL FABRIC CROSSBARS.
3. THREAD ROPE THROUGH BOTTOM OF UNIVERSAL PULLEY (SEE DETAIL E, PART #14) AND CONTINUE TOWARDS SIDE OF CANOPY AND CANTILEVERED PULLEY (SEE DETAIL B, PART #15).
4. THREAD ROPE THROUGH AND DOWN CANTILEVERED PULLEY (SEE DETAIL B, PART #15) TOWARD CLEAT ON CANOPY LEG (SEE DETAIL C, PART #21).
5. WRAP ROPE AROUND CLEAT TO SECURE TEMPORARILY WITH ENOUGH LEFT TO RETURN TO STARTING POSITION.
6. REVERSE THE ROPE PATH, USING THE FREE PULLEY WHEELS AT EACH PULLEY LOCATION UNTIL BACK AT ROPE LOCK.
7. SECURE END OF ROPE TO ROPE LOCK.
8. UNWRAP ROPE FROM CLEAT AND CHECK OPERATION AND ADJUST AS NEEDED.

CraftBit Manufacturing Co.

DESCRIPTION
CANOPY RECOMMENDED ROPE LAYOUT

DATE 10/25/2010
SCALE B
DWG (PART) NO.

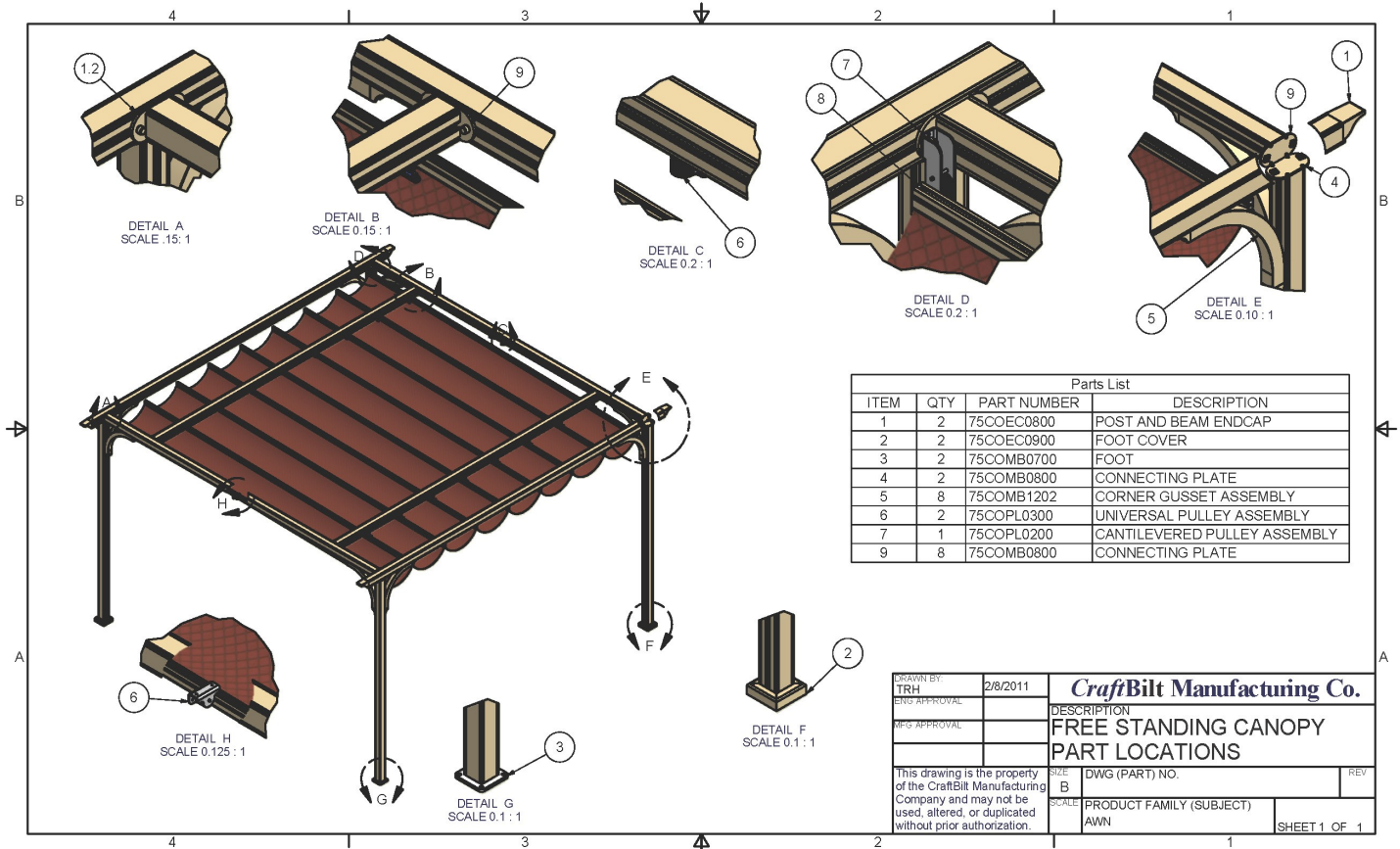
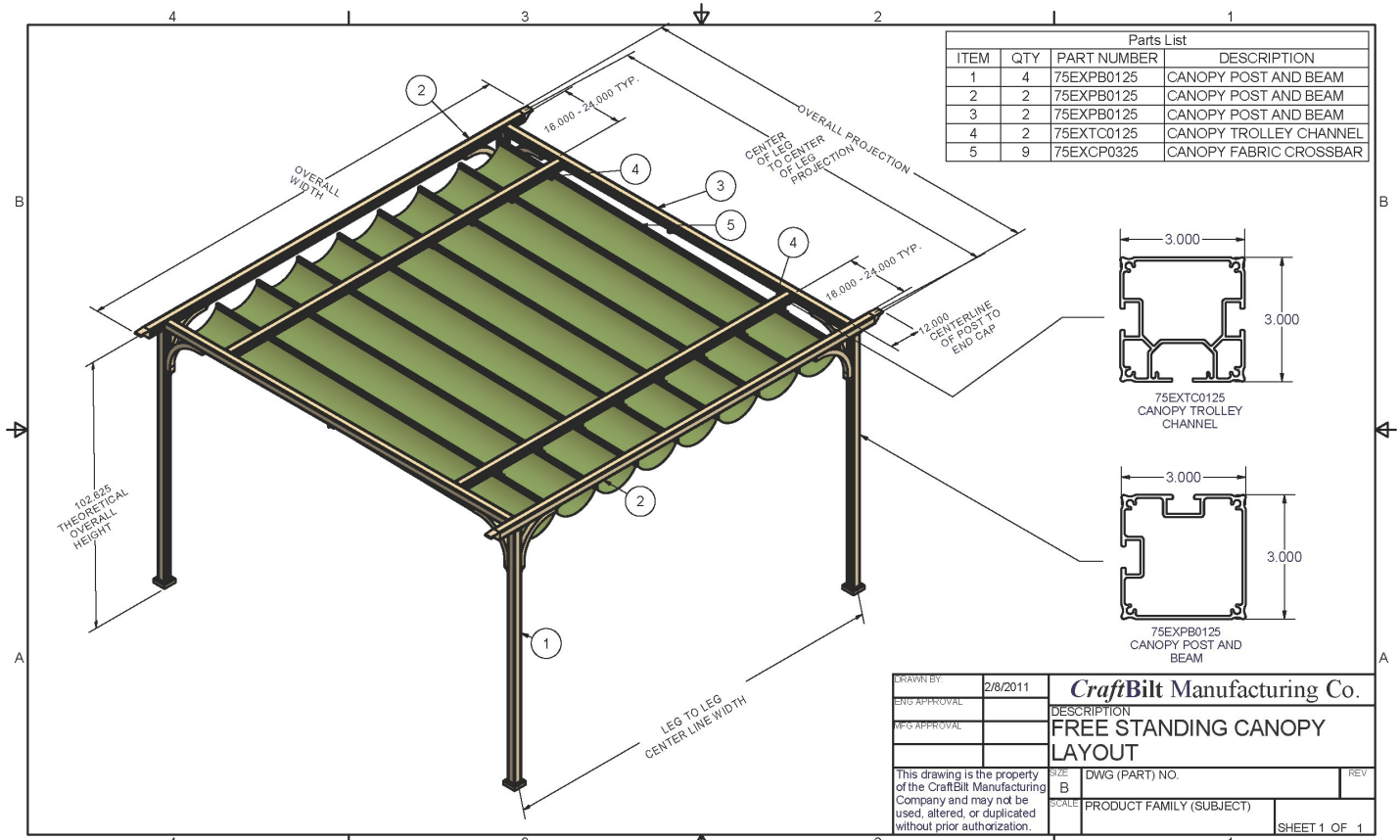
REV

PRODUCT FAMILY (SUBJECT) AWNING

SHEET 1 OF 1

This drawing is the property of the CraftBit Manufacturing Company and may not be used, altered, or duplicated without prior authorization.

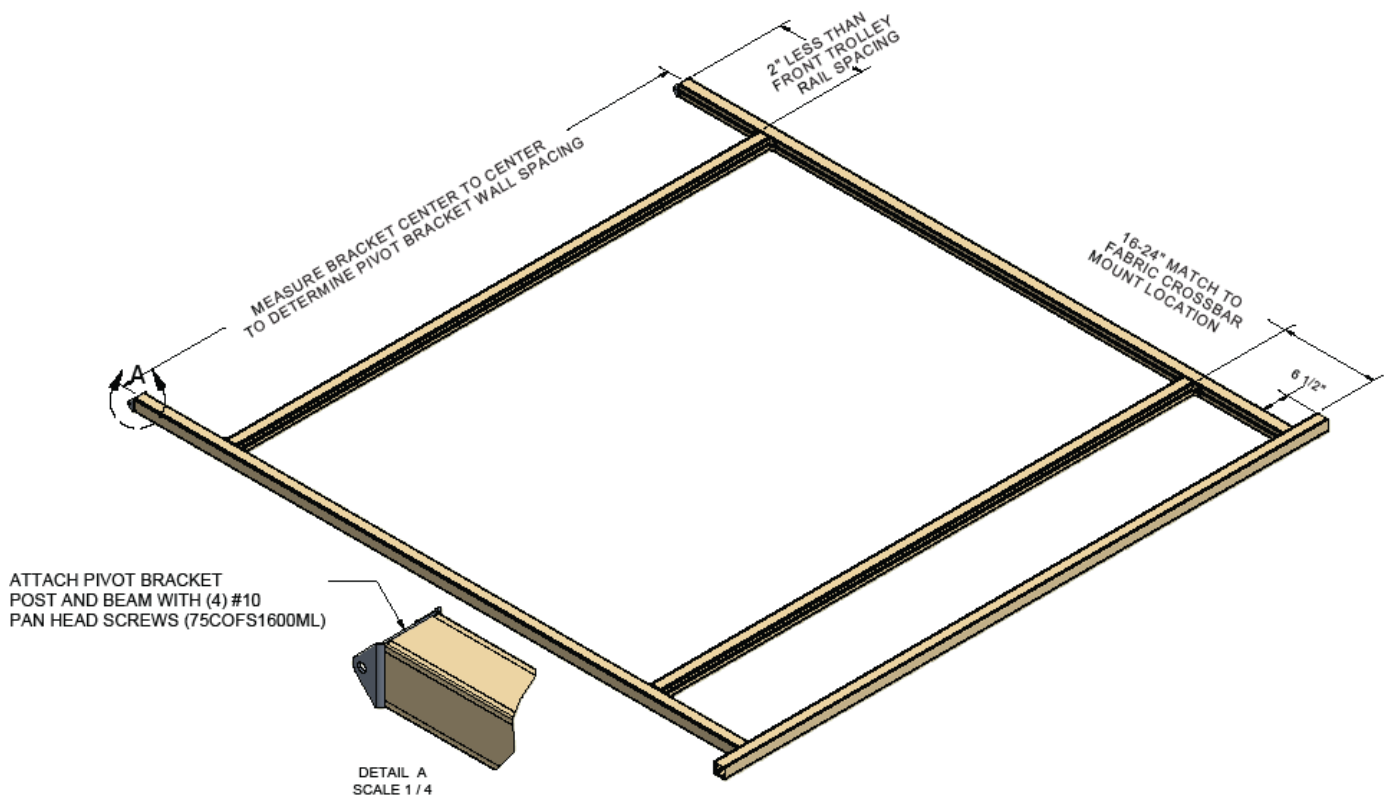
Free Standing Canopy Part Locations



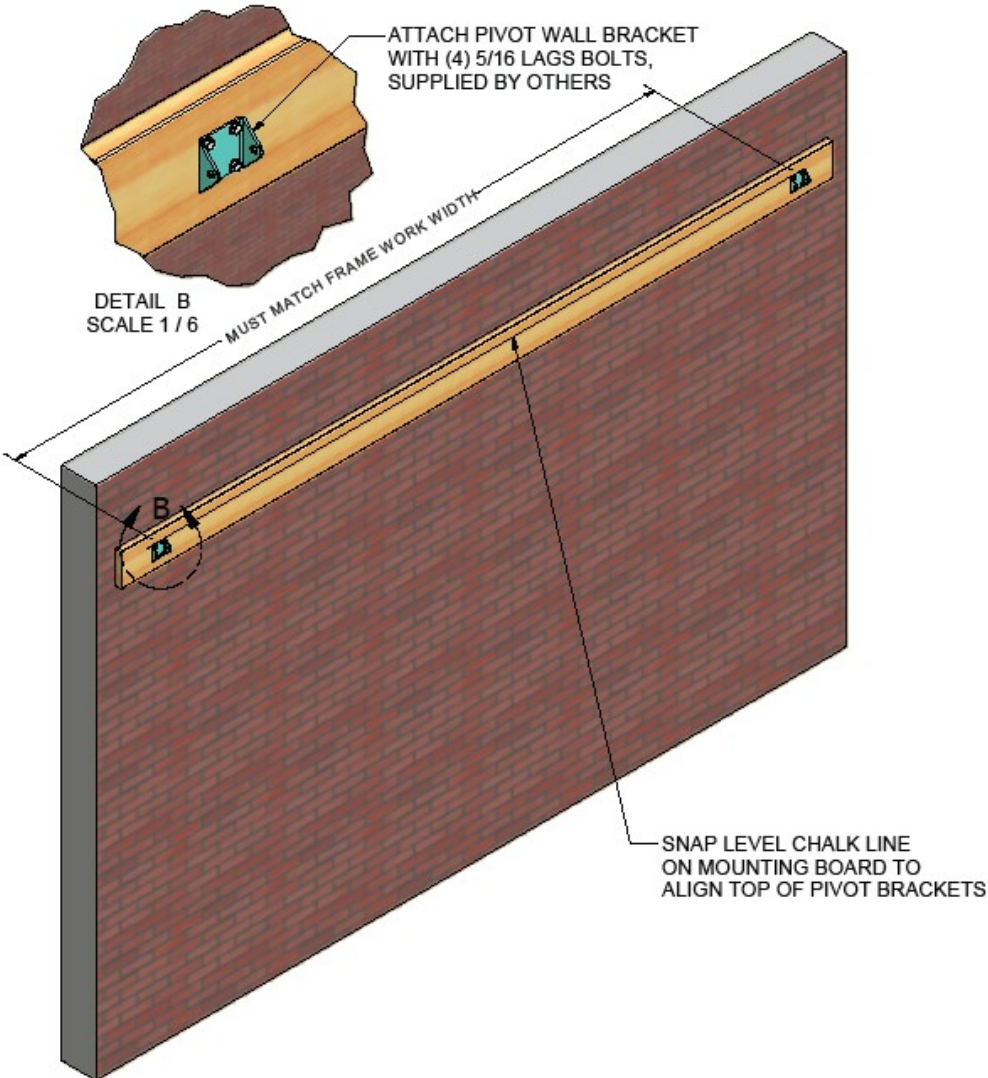
Wall Mount Canopy—Supplement

The construction of the wall mount version of the Canopy is very similar to the free standing version.

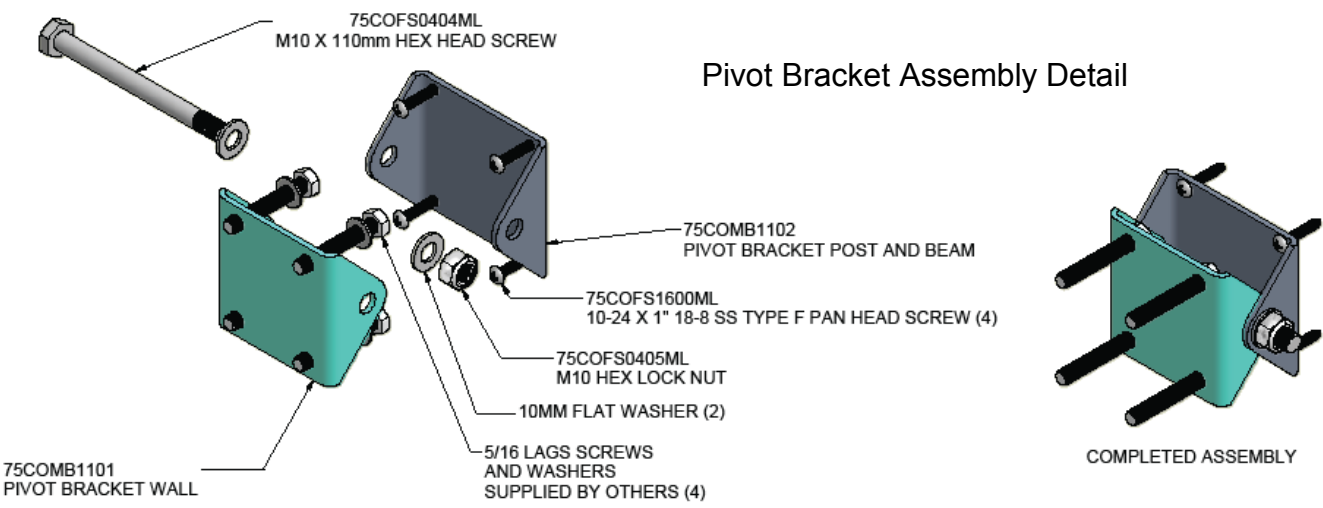
1. It is very important that you have a flat surface to mount the canopy.
2. A 2 x 8 kiln dried hem fir mounting board is recommended for siding applications. Be sure to cut out the siding, lag the board to the wall, and flash the board appropriately. Cover the board with trim coil or CBM vinyl cover. (Step by step instructions are available.)
3. Determine the mounting height of the board. If the pad is level then the top of the side beams is 102 5/8" (see page 17). If your pad is sloped you will have to adjust that height accordingly. Snap a chalk line for the mounting height to insure the beams are mounted level with each other.
4. The Pivot Brackets are mounted to the board with 5/16 x 2" lag bolts, supplied by others.
5. Fabric must be sloped away from the house to prevent water running down the foundation.
6. It is recommended that the rope cleat be mounted to one of the canopy posts.
7. Layout Post & Beam and Trolley Channels extrusions on a flat surface. Assemble them as shown below.
8. Tighten all M8 bolts
9. Attach Pivot Bracket Post and Beam. Refer to Drawing below for more details on Pivot Bracket assembly.
10. Please refer to the attached drawings on pages 15-17 for additional information.



Wall Mount Canopy-Continued

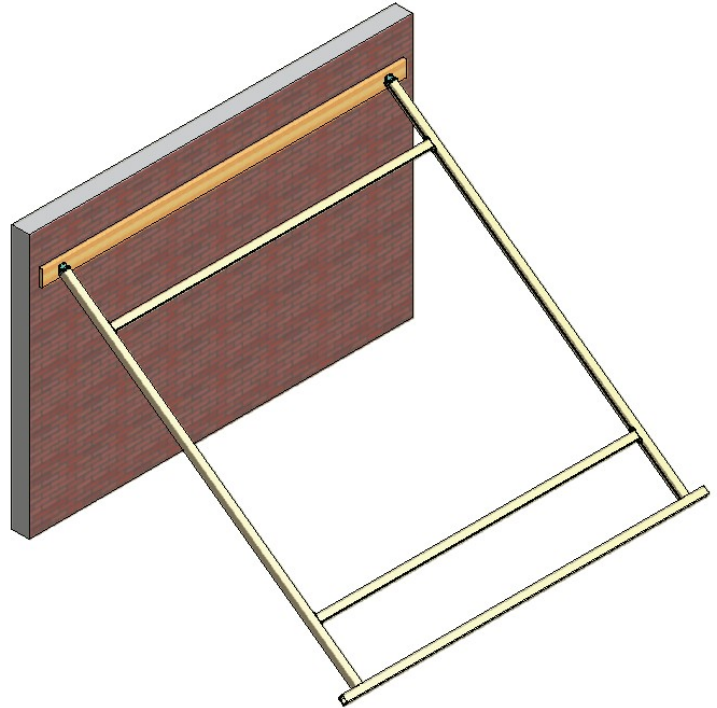


Pivot Bracket Assembly Detail

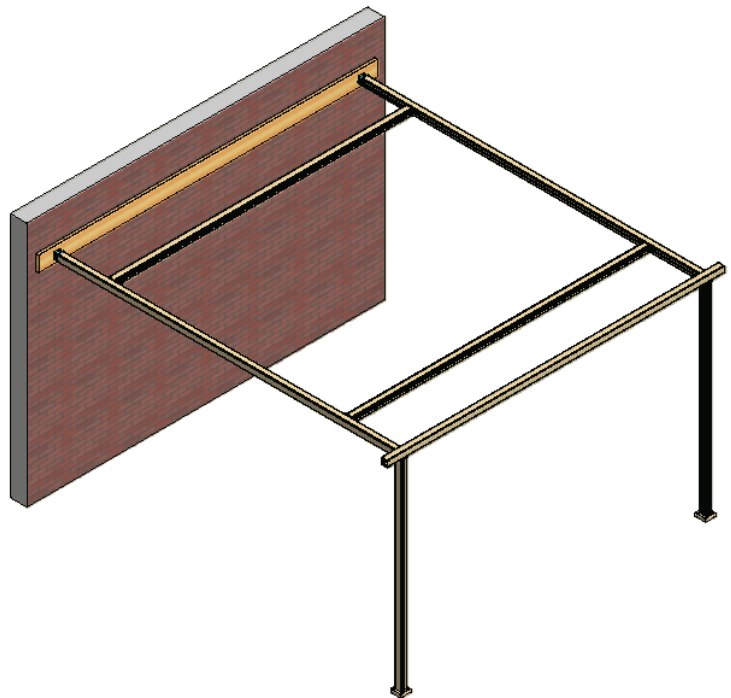


Wall Mount Canopy-Continued

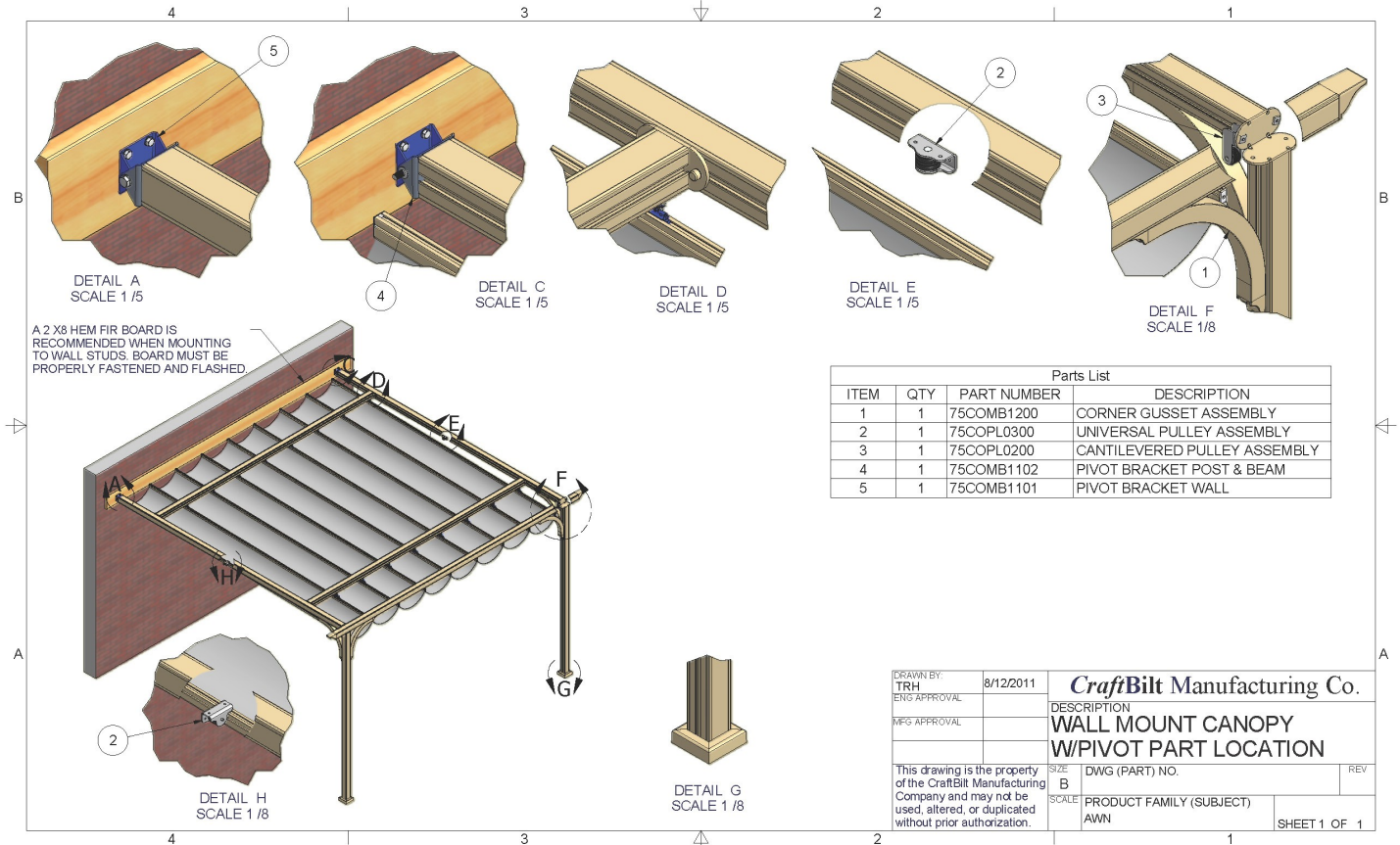
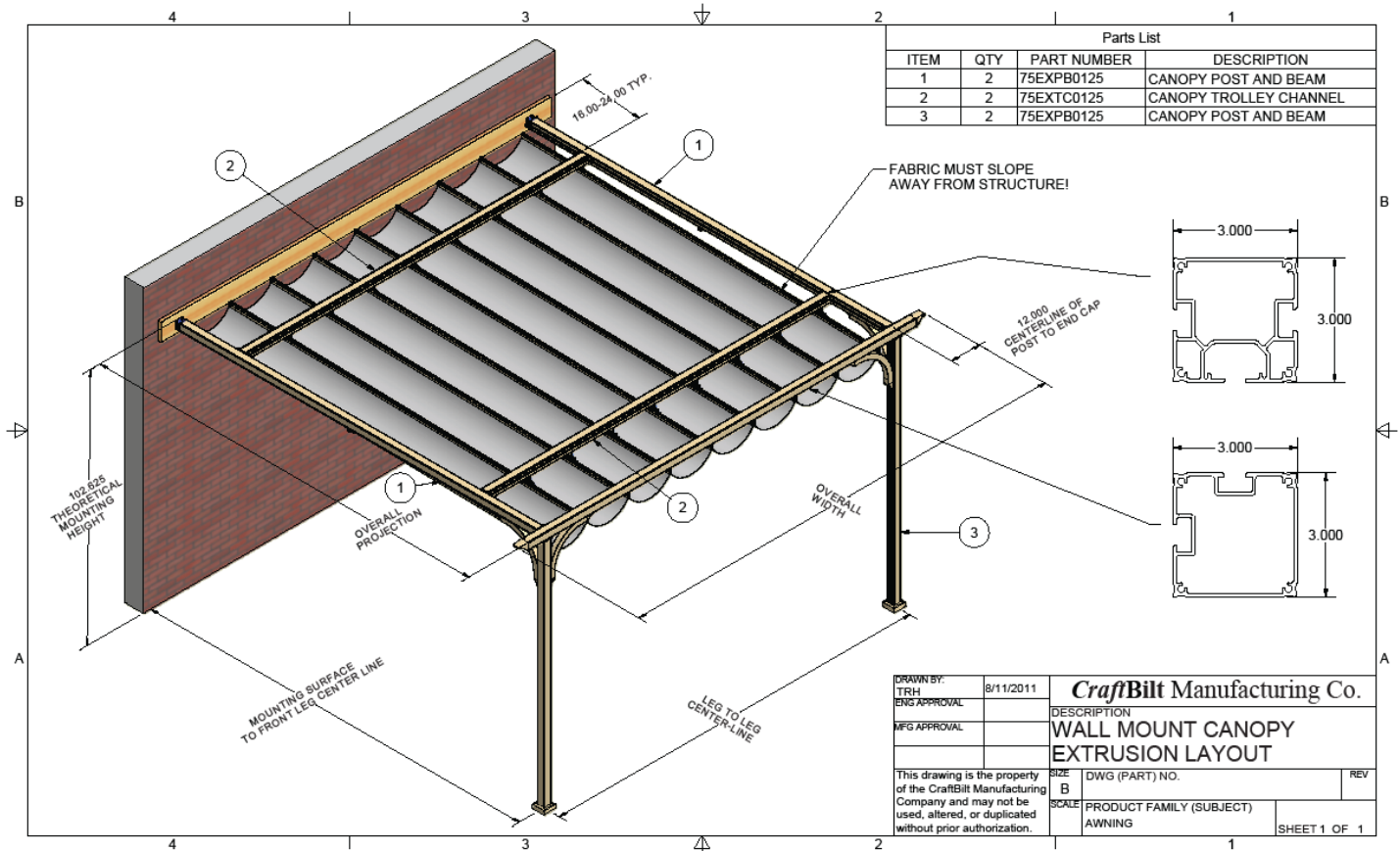
11. Using two people, lift up the frame and place it into the Pivot Brackets. Fasten Brackets together with the M10 bolt, washers and lock nut. See page 15 for fastener details.



12. Using two people lift up the free side of the frame and place the legs under it. Fasten them securely.
13. Follow the remaining steps for a Free Standing Canopy to finish the installation.



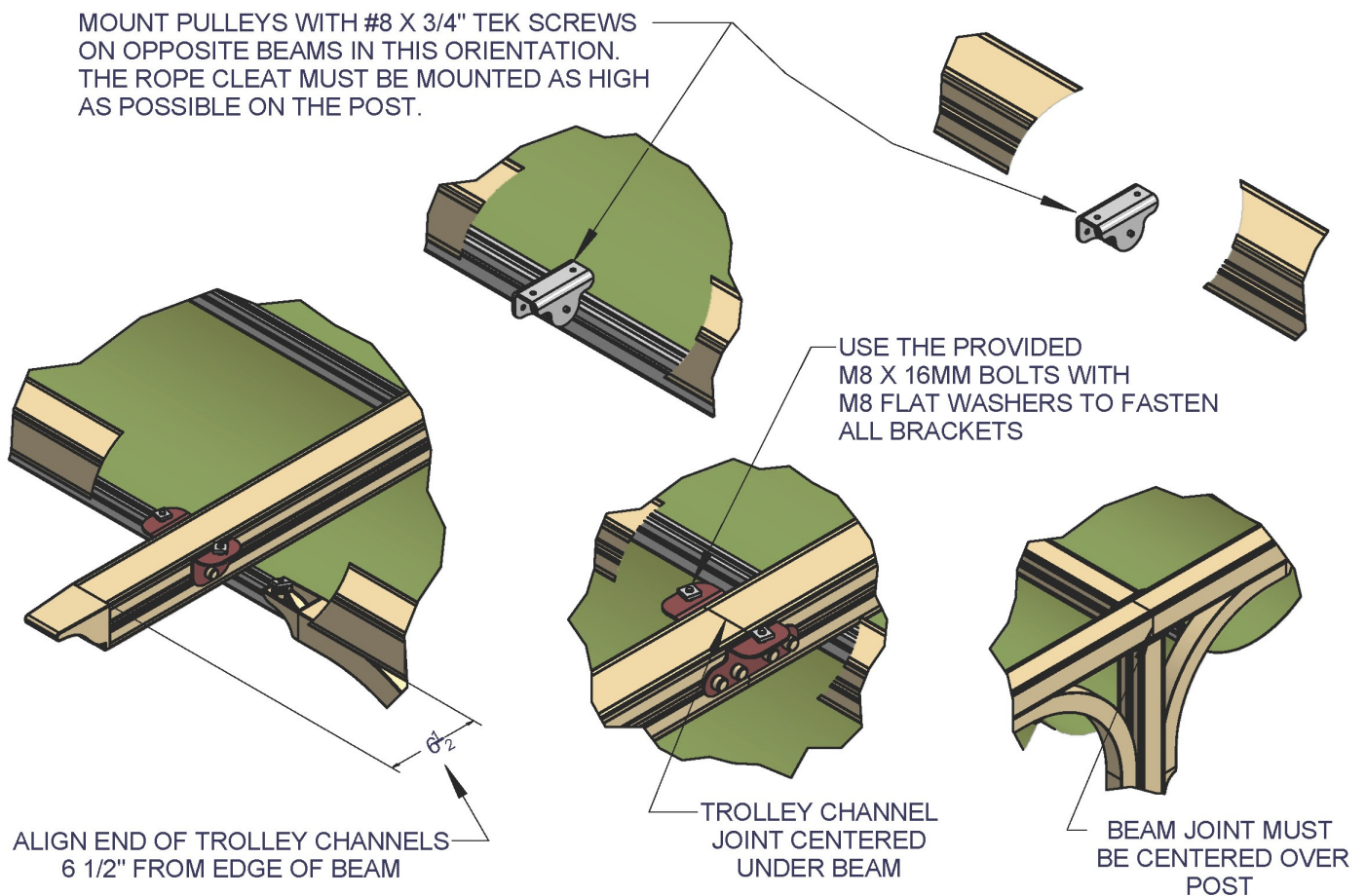
Flush Wall Mount Canopy Part Locations



Under Mount Continuous Fabric/Joined— Supplement

Continuous fabric configured canopies require the trolley channels mounted under the beams.

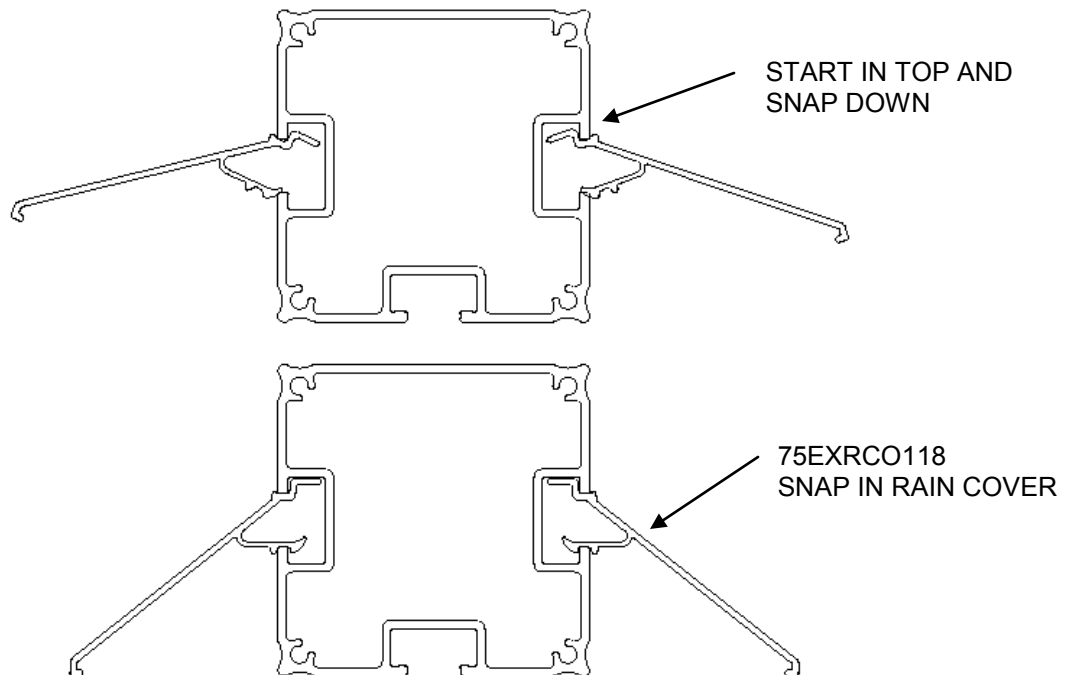
1. Follow all the steps for building the frame work for a standard free standing unit.
2. Review the attached drawings on page 17 to determine how the 3 way posts/beams are used, and where the additional gussets are attached..
3. Trolley channels must always be joined below a crossbeam. Beams must always be joined over a post. A third Trolley channel is used on projection greater than 14'. An additional beam is placed above the gathered fabric on projections greater than 16'.
4. The Trolley Channels are mounted with Trolley Channel Under Mount Brackets and are joined with Trolley Channel Joiner Brackets. We recommend you first hand tighten the brackets to the beams. Then install the remaining bolts and square nuts into the brackets. Working from one end, lift up the Trolley Channel and slide the t-slots in the Trolley Channel onto the square nuts on the Trolley Channel Under Mount Brackets, then pull back to the Joining Bracket. The holes on the Under Mount Brackets are offset to help.
5. Only one set of trolley channels have a notch for the Fixed Trolley Assembly.
6. Post and Beam End Caps are used to close off the end of each trolley channel.
7. See the drawing below for the pulley locations. Only two universal pulleys are used on opposing beams.



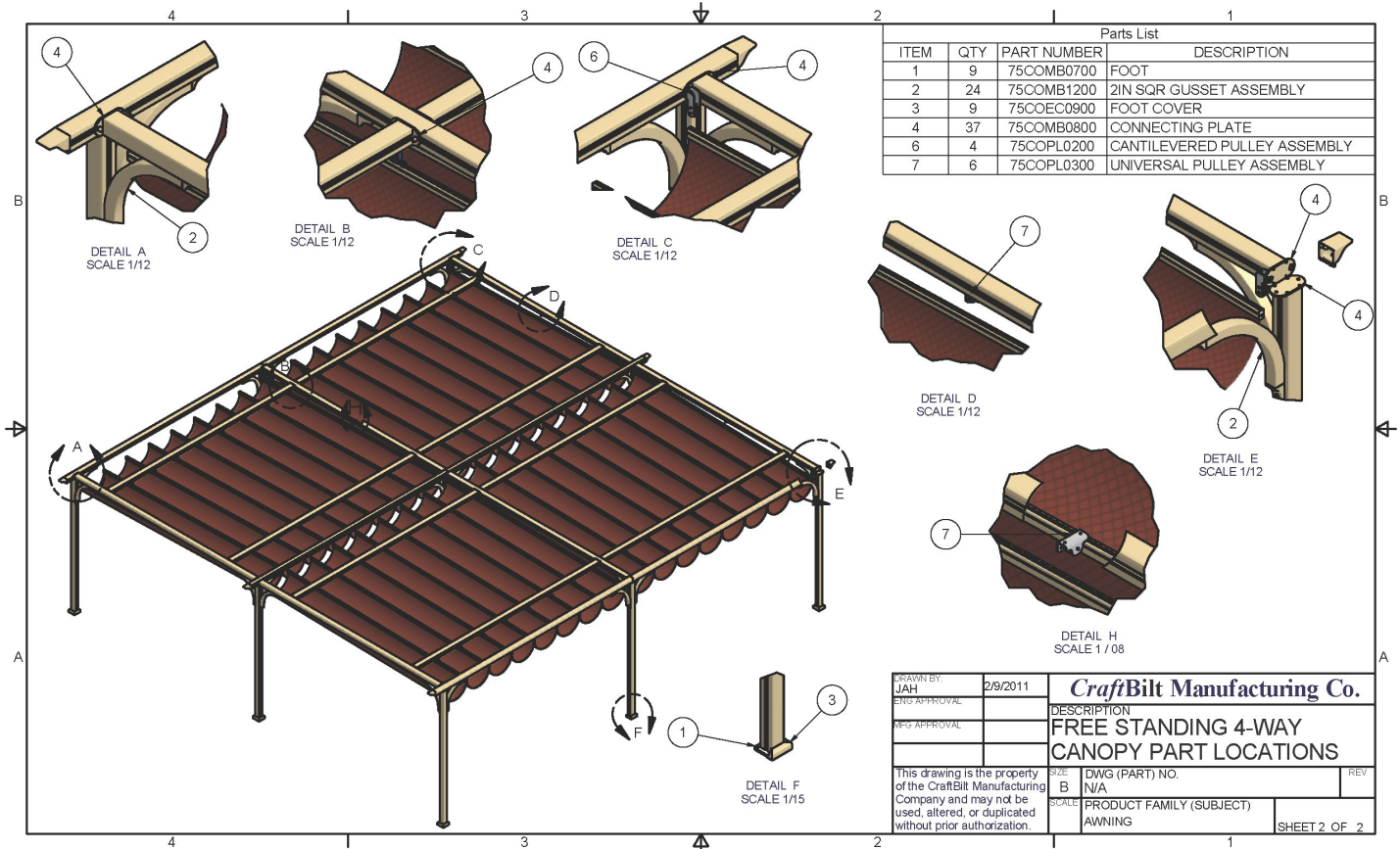
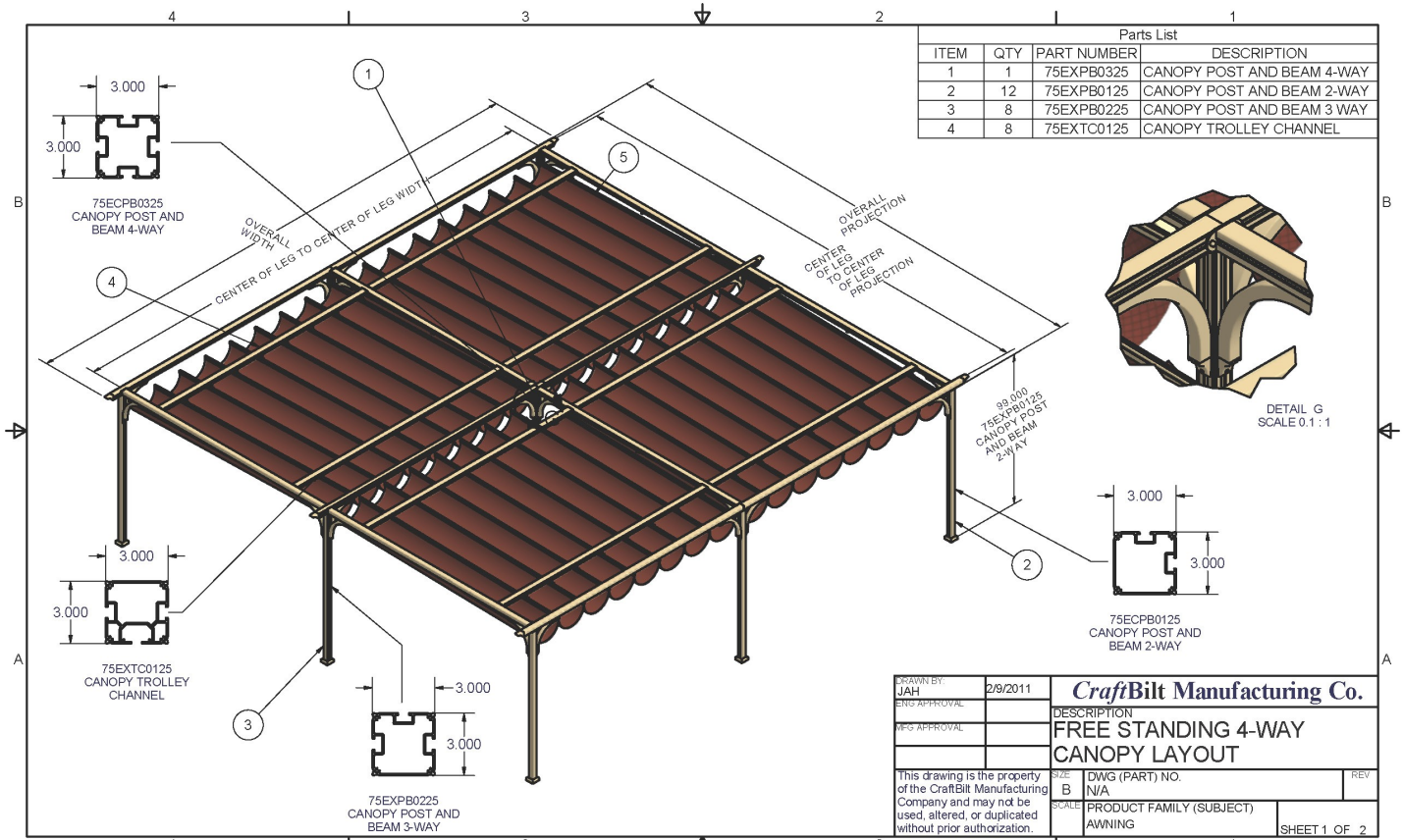
Free Standing Multiple Joined Canopy—Supplement

Assembling a multiple joined canopy is basically single units jointed together using common posts.

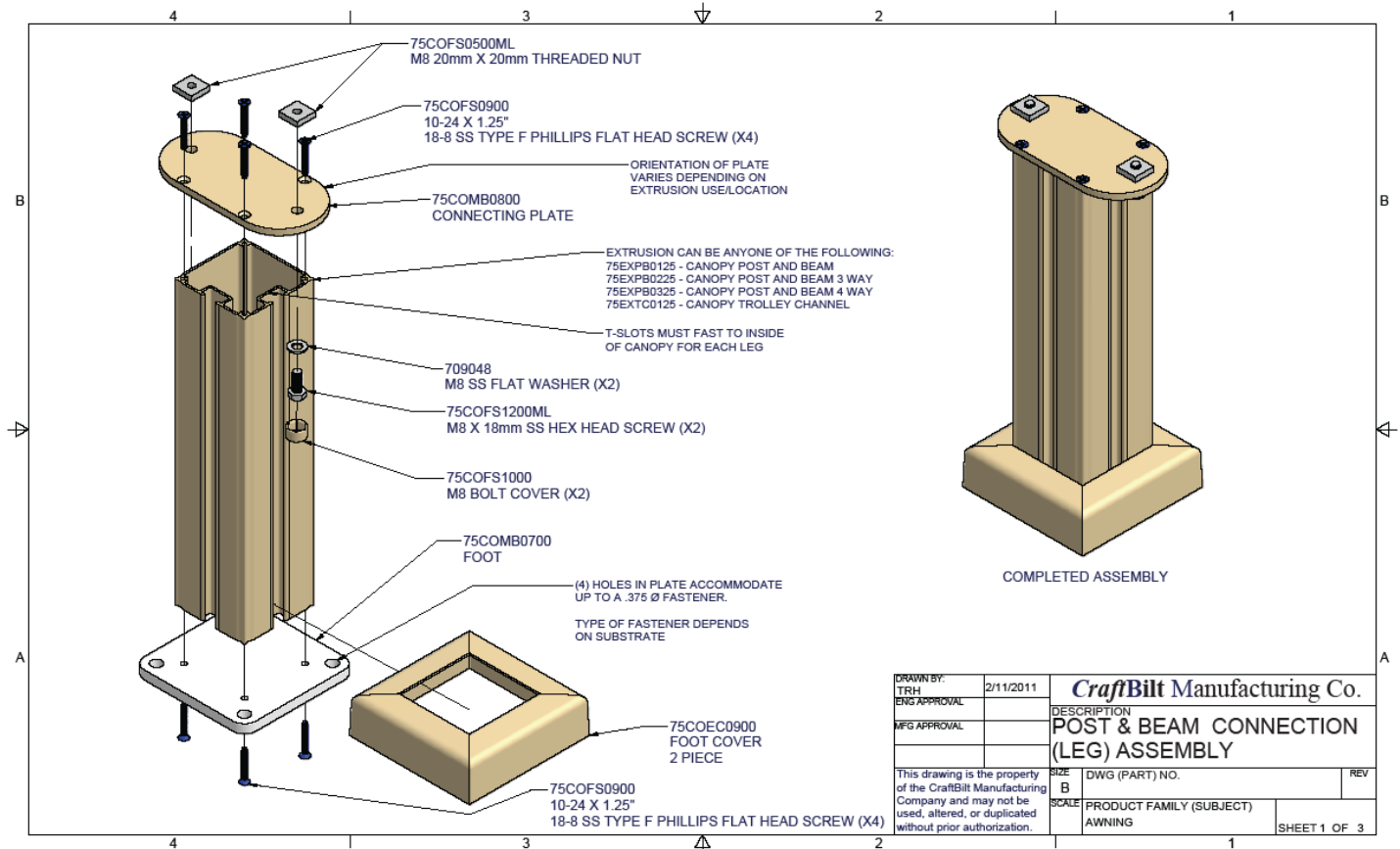
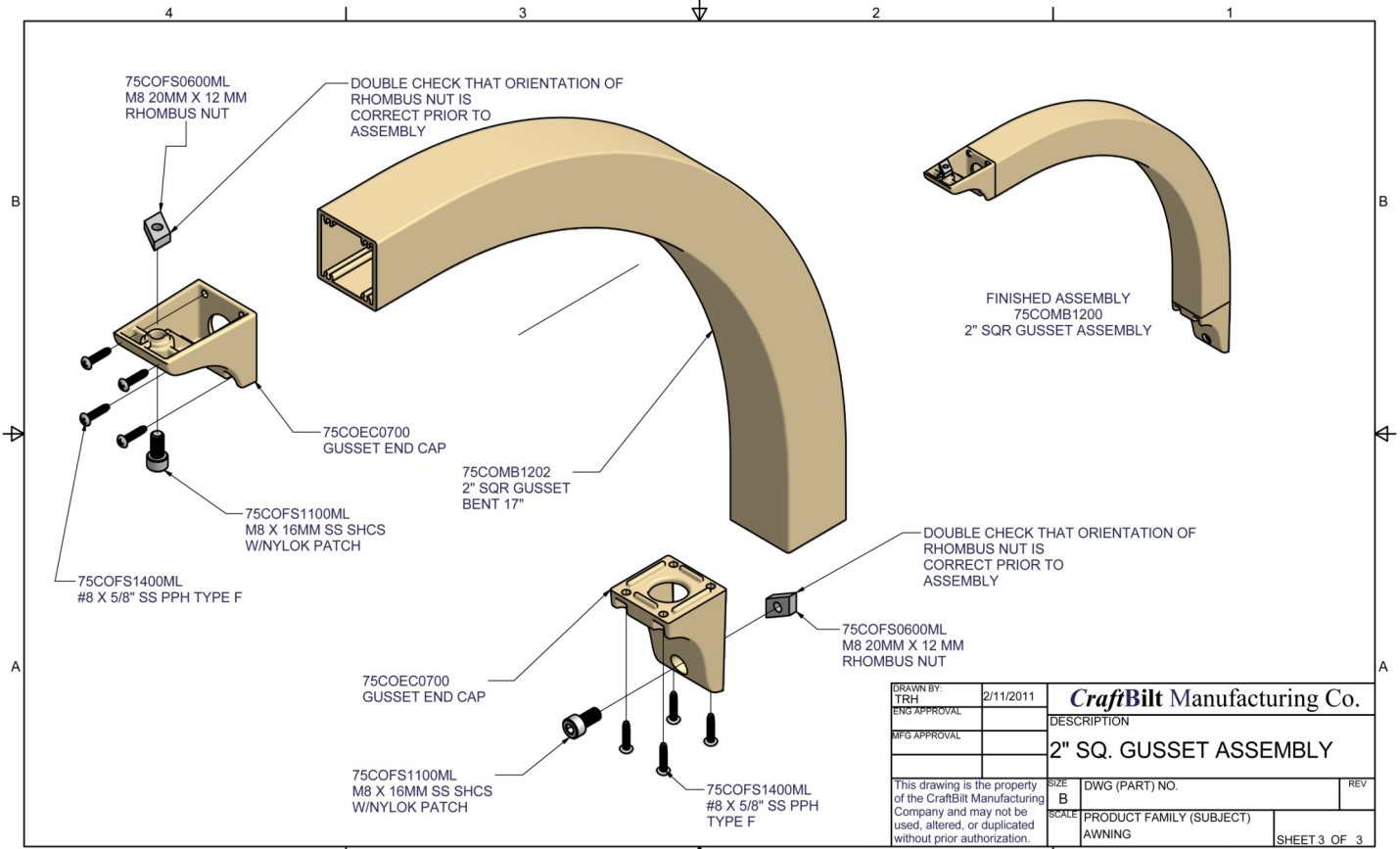
1. Review the attached drawings for the use of 3 and 4 way posts/beams, and additional gussets are attached.
2. Follow all the steps for building the frame work for a standard free standing unit.
3. All Trolley Channels are flush to the cross beams.
4. Orient Trolley Channel notched ends so that the fabric is always gathered on opposite ends. The fabric must never be joined towards each other.
5. Refer to the Joined Canopy part location drawing on page 19 for additional information.
6. An optional Rain Cover is available. It snaps into the center 3 way beams as seen below. It is used in between canopy sections to cover the gap between the sections. It is sold in lineals and cut on the job site to fit. See below for how to snap it in place.



Free Standing Multiple Joined Canopy Part Locations



Canopy Post and Gusset Assemblies



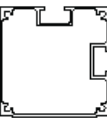



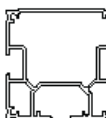

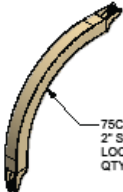
Canopy Hardware and Parts

 75COFS1100ML M8 X 16mm SS SHCS WNYLOC PATCH USED ON GUSSET END CAPS QTY: 1 PER CAP	 75COFS0500ML M8 20mm X 20mm THREADED NUT USED WITH M8 X 18mm SHCS. QTY: 2 PER CONNECTING PLATE	 75COFS0900 10-24 X 1.25" 18-8 SS TYPE F PHILLIPS FLAT HEAD SCREW USED TO CONNECT PLATES & FEET TO EXTRUSION MEMBERS QTY: 4 PER PLATE	 75COFS1000WH M8 BOLT COVER USED ON M8 BOLT HEADS QTY: 1 PER 75COFS1200ML
 75COFS1200ML M8 X 18mm SS HEX HEAD SCREW USED ON CONNECTING PLATE QTY: 2 PER CONNECTING PLATE	 75COFS0600ML M8 20mm X 12mm RHOMBUS NUT USED ON GUSSET END CAPS QTY: 1 PER CAP	 75COFS1400ML #8 X 1/2" SS PHILLIPS FLAT HEAD SHEET METAL SCREWS USED TO ATTACH FABRIC CROSS BAR END CAP QTY: 1 PER CROSS BAR CAP	 75COFS1300ML M4 X 10mm SS SOCKET HEAD CAP SCREW USED ON FABRIC CROSSBAR TROLLEY MOUNT QTY: 2 PER MOUNT
 75COFS1201ML M8 X 20mm SS HEX HEAD SCREW USED ON CANTILEVERED PULLEY ONLY ON CANOPY QTY: 1 PER PULLEY	 709048 M8 SS FLAT WASHER USED WITH M8 X 18mm SHCS. QTY: 2 PER CONNECTING PLATE	 75COFS1600ML 10-24 X 1" 18-8 SS TYPE F PAN HEAD PHILLIPS HEAD SCREW USED TO ATTACH POST AND BEAM END CAP AND PIVOT BRACKET QTY: 2 PER CAP	 75COFS1500ML M4 X .7mm SS HEX NUT USED ON FABRIC CROSSBAR TROLLEY MOUNT QTY: 1 PER MOUNT
 75COFS1202ML M8 X 16mm SS HEX HEAD SCREW USED ON TROLLEY CHANNEL JOINER BRACKET AND TROLLEY CHANNEL UNDER MOUNT BRACKET QTY: 10 PER JOINER, 4 PER UNDER MOUNT	 75COFS0405ML M10 SS HEX LOCK NUT USED ON M10 X 110MM BOLTS QTY: 1 PER BOLT	 75COFS1900ML 8-32 X 5/8" 18-8 TYPE F PHILLIPS PAN HEAD SCREW USED TO ATTACH GUSSET END CAPS QTY: 4 PER CAP	NOT SHOWN 74COPC01XXWH .187 POLYESTER ROPE USE TO EXTEND AND RETRACT CANOPY
 75COFS0404ML M10 X 110mm SS HEX HEAD SCREW USED ON PIVOT BRACKETS QTY: 1 PER PIVOT BRACKET SET	 709050 M10 SS FLAT WASHER USED WITH M10 X 110mm HEX BOLT QTY: 1 PER PIVOT BRACKET ASSEMBLY	 75COFS1902 #8 X 3/4" HEX DRIVE TEK SCREW COLOR MATCHED USED TO MOUNT FIXED TROLLEY AND PULLEYS QTY: 4 PER FIXED TROLLEY MOUNT QTY: 2 PER PULLEY	74COPC0201WH .125 POLYESTER ROPE USED TO KEEP SPACING ON FABRIC PLEATS WHEN SINGLE FABRIC IS USED
	 75COFS1700ML 3/16 X 2 1/2" 18-8 SS CLEVIS PIN USED ON FABRIC CROSSBAR TROLLEY MOUNT QTY: 1 PER TROLLEY MOUNT	 75COFS1800ML 3/16 18-8 SS HAIRPIN COTTER PIN USED TO RETAIN CLEVIS PIN QTY: 1 PER TROLLEY MOUNT	

PARTS

 75COMB0700 FOOT FOR EACH LEG QTY: 1 PER LEG	 75COPL0200 CANTILEVERED PULLEY ASSEMBLY USED TO RUN ROPE DOWN LEG QTY: 1	 75COTR1100 FABRIC CROSSBAR TROLLEY MOUNT USED ON ENDS OF TROLLEY ROD ASSEMBLY QTY: 1 FOR EACH TROLLEY	 75COMB1101 PIVOT BRACKET WALL USED ON WALL QTY: 1 FOR EACH PIVOT SET USED
 75COMB0800 CONNECTING PLATE USED ON ALL FLUSH EXTRUSION CONNECTIONS QTY: DEPENDS ON CONFIG.	 75COPL0300 UNIVERSAL PULLEY ASSEMBLY USED TO RUN ROPE FROM ONE END TO OTHER. QTY: 2	 75COMB0900 TROLLEY CHANNEL JOINER BRACKET USED FOR JOINING TROLLEY CHANNELS QTY: 2 PER JOINT	 75COMB1102 PIVOT BRACKET POST/BEAM USED ON END OF POST/BEAM EXTRUSION QTY: 1 FOR EACH PIVOT SET USED
 75COEC0800 POST AND BEAM END CAP USED ON THE ENDS. QTY: 2	 75COTR0400 FIXED TROLLEY ASSEMBLY 1" 75COTR0401 FIXED TROLLEY ASSEMBLY 2.25" 75COTR0402 FIXED TROLLEY ASSEMBLY 3" QTY: 1 PER TROLLEY CHANNEL	 75COMB1000 TROLLEY CHANNEL UNDER MOUNT BRACKET USED TO MOUNT TROLLEY CHANNELS UNDER FRAME WORK QTY: 2 PER PROJECTION POST & BEAM	
 75COEC0700 GUSSET END CAP USED ON END OF CURVED GUSSETS QTY: 2 PER GUSSET ASSEM.	 75COTR0600 TROLLEY ASSEMBLY 1" 75COTR0601 TROLLEY ASSEMBLY 2.25" 75COTR0602 TROLLEY ASSEMBLY 3" QTY: 1 PER TROLLEY CHANNEL FOR EACH FABRIC CROSSBAR	 74COCLD1XXGY ROPE CLEAT QTY: 1 PER CANOPY	
 75COEC0900 FOOT COVER USED TO COVER FOOT/ANCHOR BOLTS QTY: 1 PER FOOT	 75COEC0600 FABRIC CROSSBAR END CAP USED ON EACH END OF CROSS BAR. QTY: 2 FOR EACH CROSSBAR	 74CORL01 ROPE LOCK USED FOR ATTACHING ROPE TO FABRIC CROSS BAR QTY: 1 PER CANOPY SECTION	

EXTRUSIONS

 75EXPB0125 CANOPY POST & BEAM	 75EXPB0325 CANOPY POST & BEAM 4 WAY	 75EXCP0325 CANOPY FABRIC CROSSBAR	
 75EXPB0225 CANOPY POST AND BEAM 3 WAY	 75EXTC0125 CANOPY TROLLEY CHANNEL	 75EXRC0118 SNAP IN CANOPY RAIN COVER	 75COMB1200 2" SQR GUSSET ASSEMBLY LOCATION EACH CORNER QTY: DEPENDS ON CONFIG.

Optional Side Curtain Installation

1. Determine which side the curtain is to be installed.
2. Check the canopy posts for square and plumb. The side curtain tracks must be installed square and plumb. The maximum tolerance is approximately 3/16 overall. If greater, you must either adjust the posts or install the side curtain rails out of plumb relative to the posts.
3. Measure 1 1/4" down from the beam and place mark. This will be the mounting location for the side curtain mounting bracket. *See figure H*
4. Determine which side is the gear operator or motor mounted side, and the idle side.
5. Align the rhombus nuts and mount the idle side curtain mounting bracket on the canopy post. Tighten both M8 bolts. **Caution: The rhombus nuts must be installed correctly or the curtain could fall!**
6. Lift up fabric roll and insert idle gudgeon into bushing, align gear/motor mounting bracket and rhombus nuts, place at your mark and tighten both M8 bolts. (Note: the fabric roll feed from the inside of the canopy.)
7. Gather the 2 guide tracks. There are a left and right, look for the end caps, they are at the bottom and set on the canopy foot covers.
8. Place the drop bar end guides into the tracks and plumb the tracks and clamp to hold in position.
9. Drive the #8 x 1.00" sq. drive. screws into the clearance holes provided in the rails.
10. Repeat for the other side.
11. Snap plastic hole covers into pre-drilled clearance holes.

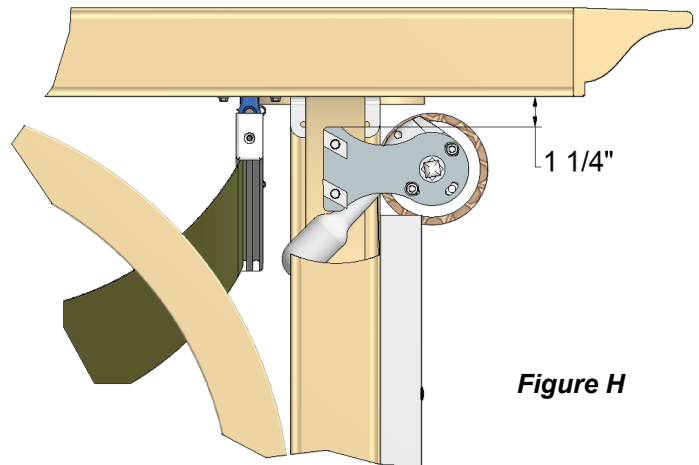
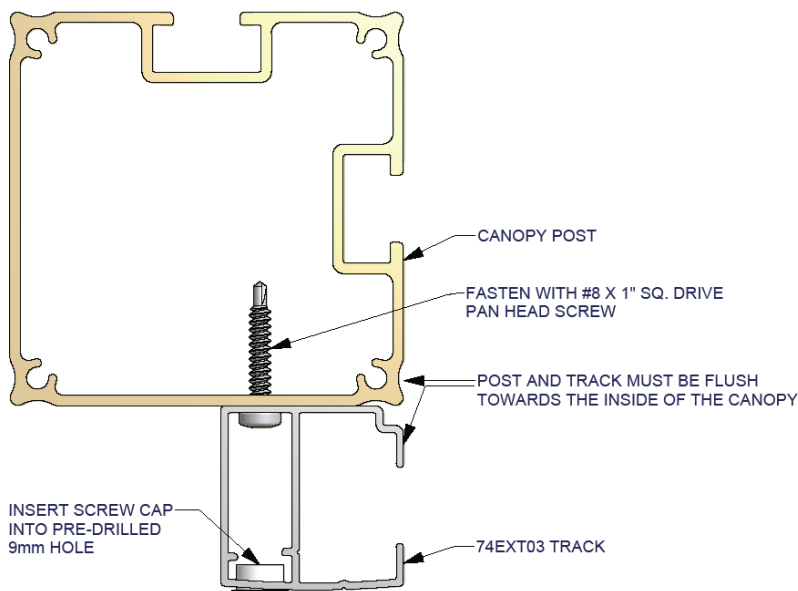


Figure H

12. Operate shade up and down to check for proper operation. Adjust as necessary.
13. Refer to page 23 for additional information.



Optional Side Curtain Part Locations

Parts List

ITEM	QTY	PART NUMBER	DESCRIPTION
1	2	75COMB06XX	SIDE CURTAIN CBM MT BRACKET
2	1	74COWG01XX	WORM GEAR 7_1
3	2	74EXTR0323	TRACK 850/1000
4	1	73COBS01XXXX	END BRACKET BUSHING
5	1	73CORG01XXXX	78mm GUIDGEON
6	1	73CORT0123ML	ROLLER TUBE 78 MM
7	2	74CORG1501	DROP BAR END CAP GUIDE
8	1	74EXDB0123	DROP BAR 850/1000
9	1	74COEC10R0	TRACK END CAP RIGHT
10	1	74COEC10L0	TRACK END CAP LEFT
11	4	75COFS1200ML	M8 X 18mm HEX HEAD SCREW
12	4	75COFS0600ML	M8 20 X 12 MM RHOMBUS NUT
13	4	73FSBC03XX	M8 HEX BOLT COVER
14	6	74COHP0101	MOUNTING HOLE COVER
15	1	73CORG1B00GY	GUGEON W_SQ PIN FOR 78mm
16	2	709052	M6 SS FLAT WASHER
17	2	74COFS01XXXX	M6 X 40mm SHCS

NOT SHOWN:
 QTY: (6) 258701ML-1 #8 X 1" SQ. DRIVE TEK SCREW
 QTY: (2) 74COPW0116ML DROP BAR WEIGHT
 QTY: (2) 709057 M6 SS HEX NUT

NOTES:
 CANOPY LEGS AND FABRIC ROLL MUST BE PLUMB AND SQUARE FOR SMOOTH AND CONSISTENT OPERATION.
 WE RECOMMEND THAT YOU DO NOT MOUNT THE GEAR CRANK AND ROPE INTO A COMMON CORNER. TANGLING OF THE ROPE MAY OCCUR.

DRAWN BY: TRH 2/10/2011
 ENG APPROVAL: []
 MFG APPROVAL: []

CraftBilt Manufacturing Co.
 DESCRIPTION: CANOPY SIDE CURTAIN W/GEAR OPERATOR
 SIZE: B
 SCALE: AWW
 DWG (PART) NO.: []
 PRODUCT FAMILY (SUBJECT): []
 REV: []
 SHEET 1 OF 4

Parts List

ITEM	QTY	PART NUMBER	DESCRIPTION
1	2	75COMB06XX	SIDE CURTAIN MT BRACKET
2	2	74EXTR0323	TRACK 850/1000
3	1	73COBS01XXXX	END BRACKET BUSHING
4	1	73CORG01XXXX	78mm GUIDGEON
5	1	73CORT0123ML	ROLLER TUBE 78 MM
6	2	74CORG1501	DROP BAR END GUIDE
7	1	74EXDB0123	DROP BAR 850/1000
8	1	74COEC10R0	TRACK END CAP RIGHT
9	1	74COEC10L0	TRACK END CAP LEFT
10	4	75COFS1200ML	M8 X 18mm HEX HEAD SCREW
11	4	75COFS0600ML	M8 20 X 12 MM RHOMBUS NUT
12	4	73FSBC03XX	M8 HEX BOLT COVER
13	6	74COHP0101	MOUNTING HOLE COVER
14	1	70RTMTR-2	SOMFY MOTOR 530R2 RT W/PLUG
15	1	7078CRN-50	CROWN LT50 DS78
16	1	706070502	BRACKET LT50 LT60 MTR
17	2	75COFS03XXXX	M6 X 16 HEX HEAD SS
18	2	709052	M6 SS FLAT WASHER

NOT SHOWN:
 QTY: (6) 258701ML-1 #8 X 1" SQ. DRIVE TEK SCREW
 QTY: (2) 74COPW0116ML DROP BAR WEIGHT
 QTY: (1) 7078DRV DRIVE LT50 DS78

NOTES:
 CANOPY LEGS AND FABRIC ROLL MUST BE PLUMB AND SQUARE FOR SMOOTH AND CONSISTENT OPERATION.
 WE RECOMMEND THAT YOU DO NOT MOUNT THE GEAR CRANK AND ROPE INTO A COMMON CORNER. TANGLING OF THE ROPE MAY OCCUR.

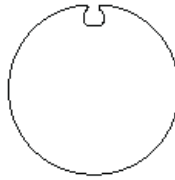
DRAWN BY: TRH 2/10/2011
 ENG APPROVAL: []
 MFG APPROVAL: []

CraftBilt Manufacturing Co.
 DESCRIPTION: CANOPY WITH MOTORIZED SIDE CURTAIN
 SIZE: B
 SCALE: AWW
 DWG (PART) NO.: []
 PRODUCT FAMILY (SUBJECT): []
 REV: []
 SHEET 2 OF 4

SIDE CURTAIN PARTS



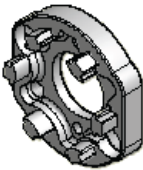
75COMB06XX
SIDE CURTAIN
MOUNTING BRACKET
USE 2 PER SIDE
CURTAIN TO SUPPORT
ROLLER



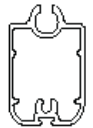
73CORT0123ML
ROLLER TUBE 78 MM
HOLDS FABRIC
USE 1 PER CURTAIN



73FSBC03XX
M8 HEX BOLT COVER
USE (1) PER BOLT



706070502
BRACKET LT50
USE 1 TO MOUNT
SOMFY MOTOR



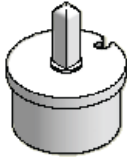
74EXDB0123
DROP BAR
ATTACHED TO BASE OF
FABRIC USE ONE PER
CURTAIN



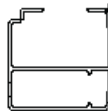
75COFS1200ML
M8 X 18mm HEX HEAD
SCREW
USED TO ATTACH SIDE
CURTAIN MOUNTING
BRACKET
USE 2 PER MOUNTING
BRACKET



709048
M8 SS FLAT WASHER
USE 1 PER M8 X 18mm
HEX HEAD SCREW



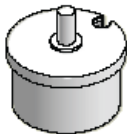
73CORG1300GY
GUDGEON W/SQ. PIN
FOR 78MM
USE 1 FOR GEAR
OPERATION



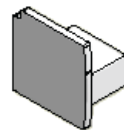
74EXTR0323
TRACK 850/1000
USE (2) TO GUIDE
DROP BAR



75COFS0600ML
M8 20 X 12MM
RHOMBUS NUT
USED 1 PER M8 X
18mm HEX HEAD
SCREW



73CORG01XXXX
78mm GUDGEON
USE 1 PER TUBE



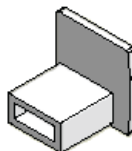
74COEC10R0
TRACK END CAP RIGHT
USE 1 ON BOTTOM OF
TRACK



74COFS03XXXX
M6 X 16 SS HEX BOLT
USE 2 PER SOMFY
MOTOR TO SIDE
CURTAIN BRACKET



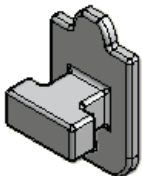
75COWG01XX
WORM GEAR 7:1
USE 1 FOR MANUAL
OPERATION



74COEC10L0
TRACK END CAP LEFT
USE 1 ON BOTTOM OF
TRACK



709052
6mm FLAT WASHER
USED 1 PER M6 HEX
BOLT



74CORG1501
DROP BAR END GUIDE
INSRALLLED ON END OF
DROP BAR



73COBS01XXXX
END BRACKET
BUSHING
USED IN MOUNTING
BRACKET



74COHP0101
9mm HOLD COVER
USE 1 PER DRILL HOLE
TO COVER SCREW



258701ML-1
#8 X 1" SQ. DRIVE TEK
USE 1 PER DRILL HOLE
TO ATTACH TRACKS

NOT SHOWN:
74COPW0116ML DROP BAR WEIGHT
SOMFY MOTORS
SOMFY DRIVES AND GUDGEONS



74COFS01
M6 X 40mm SHCS
USED TO MOUNT
GEAR



709057
M6 SS HEX NUT
USED ON m6 SCREW