

# OLDE ENGLISH WALL™ — A LOT OF VERSATILITY FROM A SINGLE WALL UNIT



*It's Modular!*

The universal size (4 in. high x 8 in. deep x 12 in. long) and efficient design allow wall units to be placed in unlimited patterns — from staggered running bond to random placement in straight, curved or serpentine walls — with little or no cutting. Vertical “soldier” units can be interspersed throughout the wall design — face side out or top side out. The multipurpose shape also doubles-up as a cap. The tumbled units have distressing on all surfaces for a natural stone look any way it’s viewed. No individual corner stones are needed.

**Adaptable!** — *The 12-inch length is the perfect dimension for most projects. Maximum wall heights are:*

- 20 inches with proper backfill for freestanding and retaining walls without using glue
- 30 inches with proper backfill and glue
  - 72 inches for freestanding and engineered systems with Cambridge Universal Geogrid



**Double-sided!** — *Ideal for:*

- Freestanding walls
- Retaining walls
- Planter and garden walls
- Seat walls in traditional and “domino” designs
- Outdoor kitchens and bars
- Columns
- Steps
- Edging and curbing (example: in lieu of Belgian block)

**Color coordinated!** — *Wall units are available in four natural stone blends, which match or complement Cambridge Pavingstones colors.*

- Toffee/Onyx
- Ruby/Onyx
- Onyx/Natural
- Sahara/Chestnut

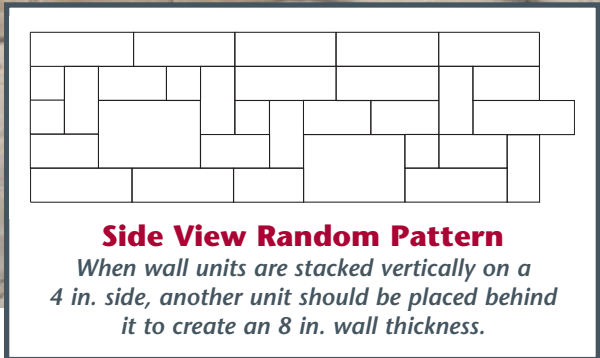




# CAMBRIDGE OLDE ENGLISH WALL™ SYSTEM • PATTERNS & COLORS



**Side View Running Bond Pattern**

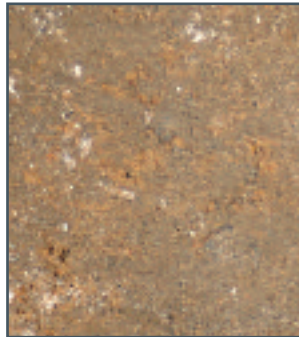


## Olde English Wall Color Selections

**Onyx/Natural**



**Toffee/Onyx**



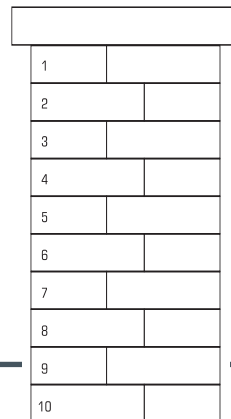
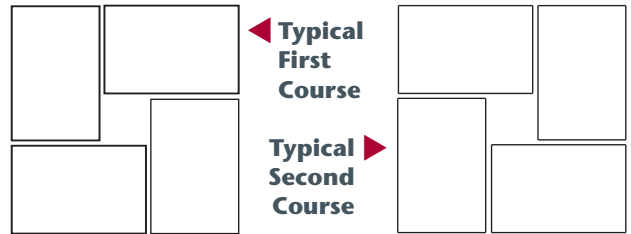
**Sahara/Chestnut**



**Ruby/Onyx**



## Building A Column



After building the base to recommended specifications, lay the wall units as shown to make a 20 in. x 20 in. column. Overlap the vertical joints from the previous course. No cutting is necessary.

Inquire about other Cambridge Wall Systems, Pre-packaged Column Kit made with MaytRx 6® and Complete Pyzique® Barbeque & Fire Pit Kit.

